

The Heath LN Parasol

One of the more popular homebuilts of the late '20s and early '30s was the Heath Parasol. Designed by Ed Heath, the Parasol was an extremely low cost airplane for its day — the total kit at one time sold for approximately \$200.00.

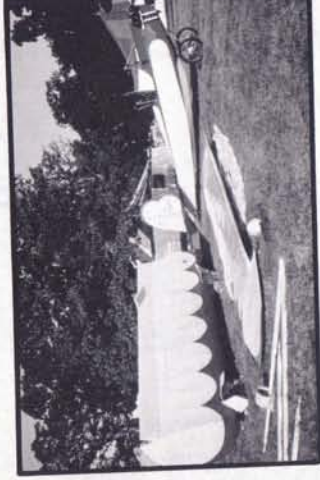
The Heath Parasol was usually powered by the Heath conversion of the Henderson four cylinder motor-cycle engine. Many later models used the Continental A-40. The Heath had a reputation as an excellent short field performer, getting in and out of small fields with ease. Full span ailerons made lateral control easy at all speeds and the comparatively large rudder and elevators not only made slow flight easy, but the controls were balanced and of equal response.

Beginning this month with the fuselage, we are reproducing the plans for the Heath LN Parasol. Over the next three months, we'll bring you the complete set of plans for this handsome single place airplane. Again, the purpose of presenting these drawings is not necessarily to encourage the construction of this model, but rather to serve as a method of comparison and education.

The Heath pictured here was donated to the EAA Aviation Foundation by Gary Rudolph (EAA 189784) of Vincennes, Indiana. This 1932 Model Heath was named Outstanding Silver Age Antique at Oshkosh '85 and Reserve Grand Champion Antique at Oshkosh '86.



Jim Koepnick



Gene Chase

Photo Layout by Jim Koepnick

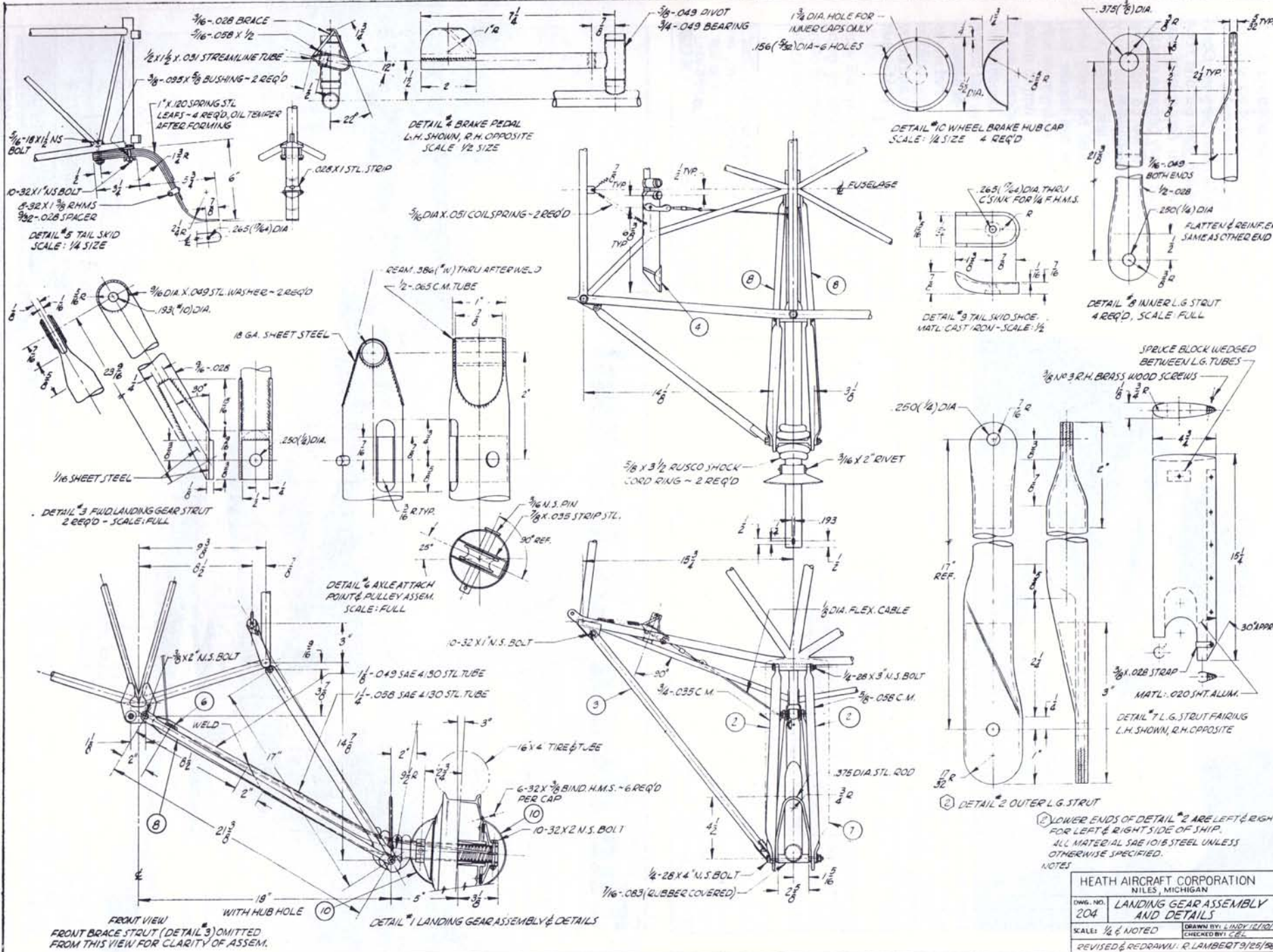
EAA EXPERIMENTER

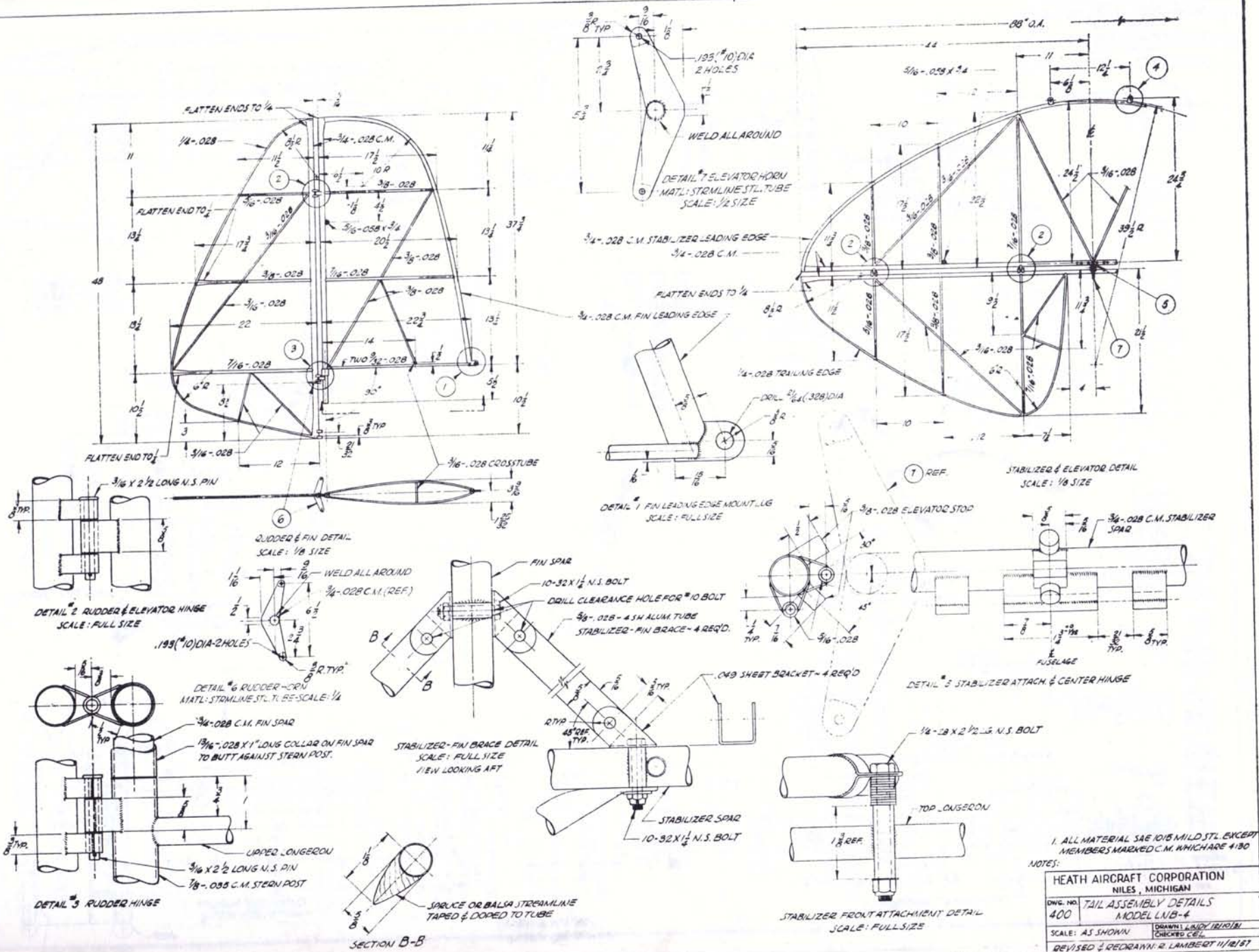
PLAN
2

AIRCRAFT PLANS

HEATH LN PARASOL

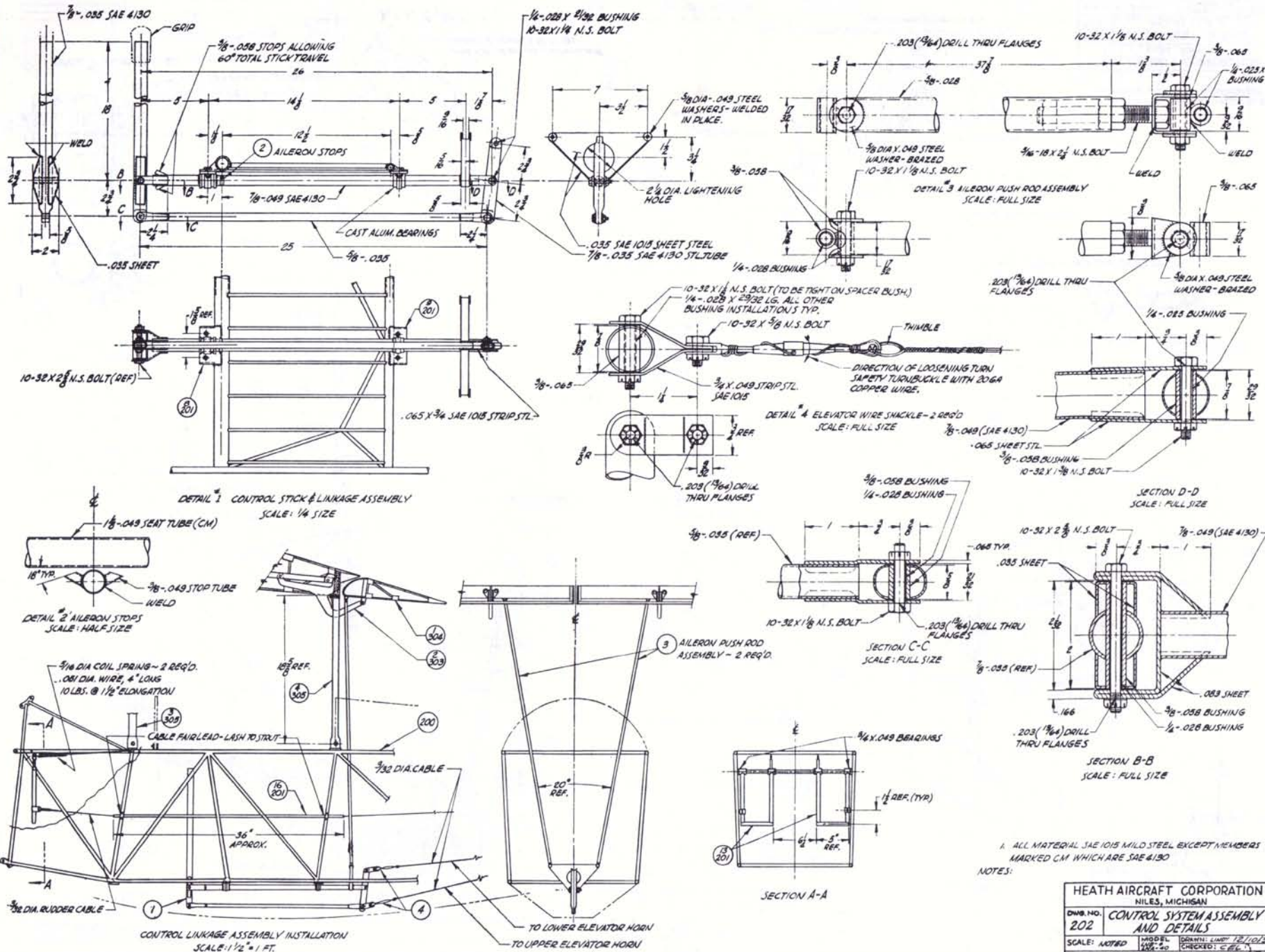
14 JULY 1987





HEATH AIRCRAFT CORPORATION
 NILES, MICHIGAN
 DWG. NO. 400 TAIL ASSEMBLY DETAILS
 MODEL LNB-4
 SCALE: AS SHOWN
 DRAWN: LLOYD W. BROWN
 CHECKED: C.E.L.
 REVISED & REDRAWN BY R. LAMBERT 11/21/57

16 JULY 1987

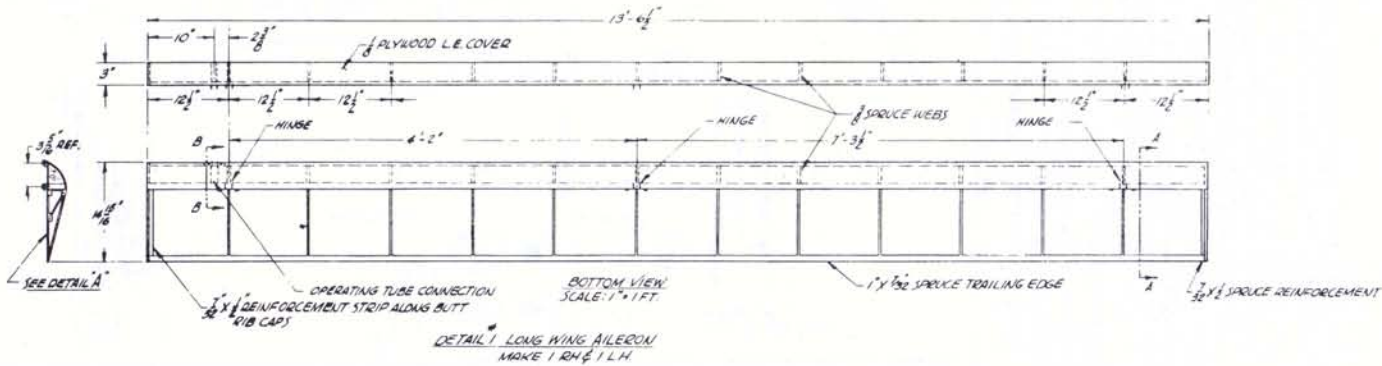
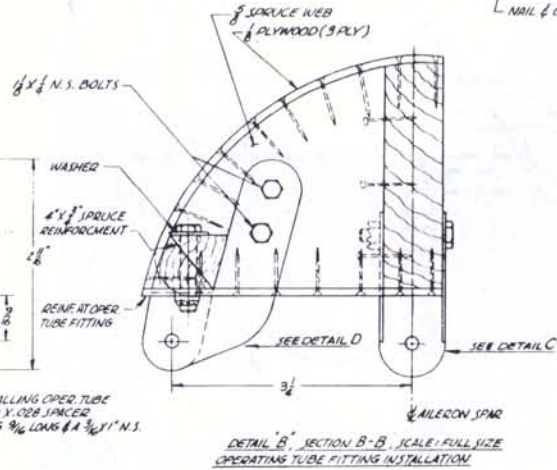
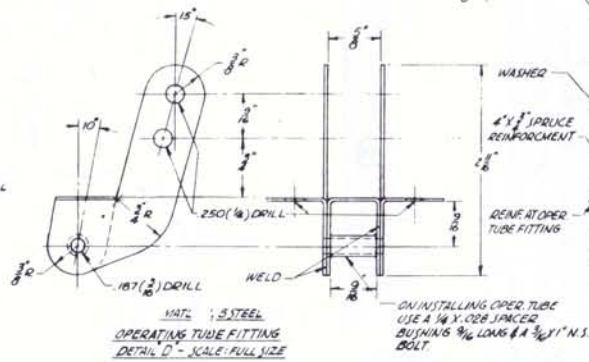
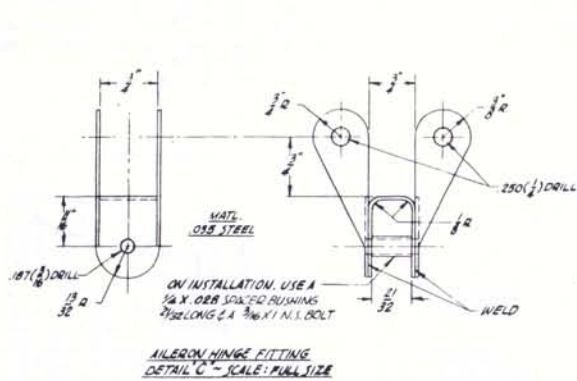
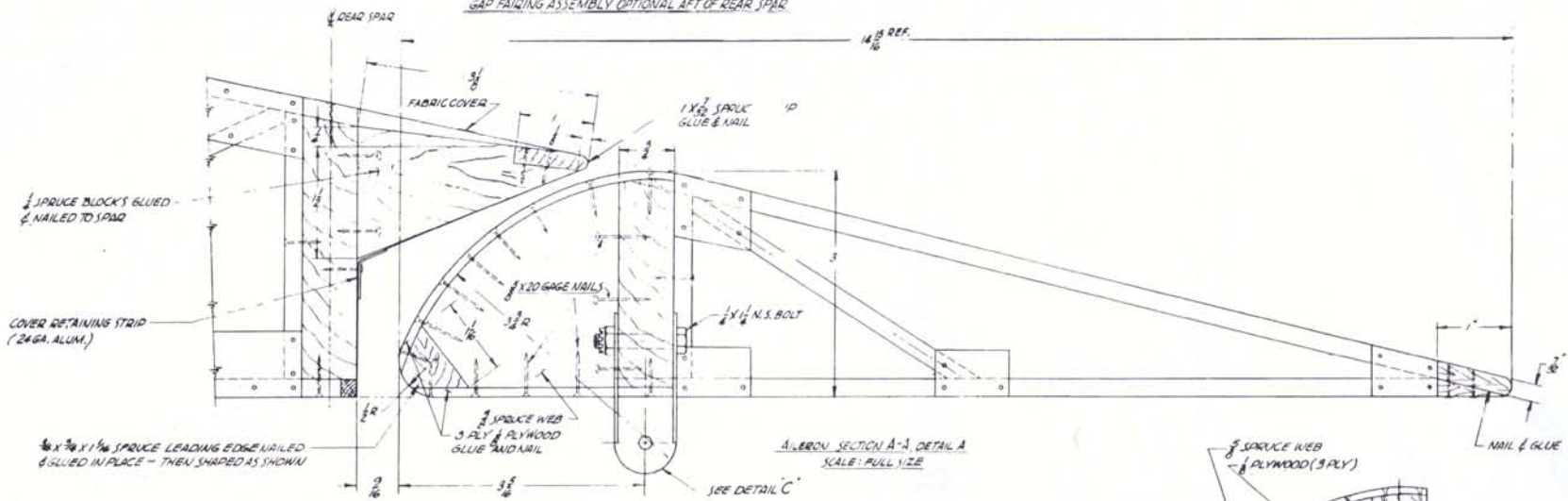


1. ALL MATERIAL SAE 1015 MILD STEEL EXCEPT MEMBERS MARKED CM WHICH ARE SAE 4130
 NOTES:

HEATH AIRCRAFT CORPORATION NILES, MICHIGAN	
DWG. NO. 202	CONTROL SYSTEM ASSEMBLY AND DETAILS
SCALE: NOTED	DATE: 12/10/81 CHECKED: C.E.L.
REVISED & REDRAWN BY: ROB LAMBERT 9/1/80	

GAP FAIRING ASSEMBLY OPTIONAL AFT OF REAR SPAR

14" REF.



1	MODIFIED GAP FAIRING	CAN 5-9-42
HEATH AIRCRAFT CORPORATION NILES, MICHIGAN		
DWG. NO. 304	KOOD AILERON DETAILS KWOOD LWB-4 & LWA-40	
SCALE: AS INDICATED	DESIGNED BY E. LAMBERT	DATE 11/21/41
REVISED & REDRAWN	E. LAMBERT	11/21/41

