

P-47D COMBAT Fuselage is completely covered in 1/16" Balsa Sheet

Front of wing is also sheeted from back of LE to Spar, top and bottom.

Single Piece wing is built INVERTED on a flat surface.

Top and Bottom Main Spars are single piece 1/8x1/8 Spruce

Aft Spar is 1/4x1/4 Hard Balsa

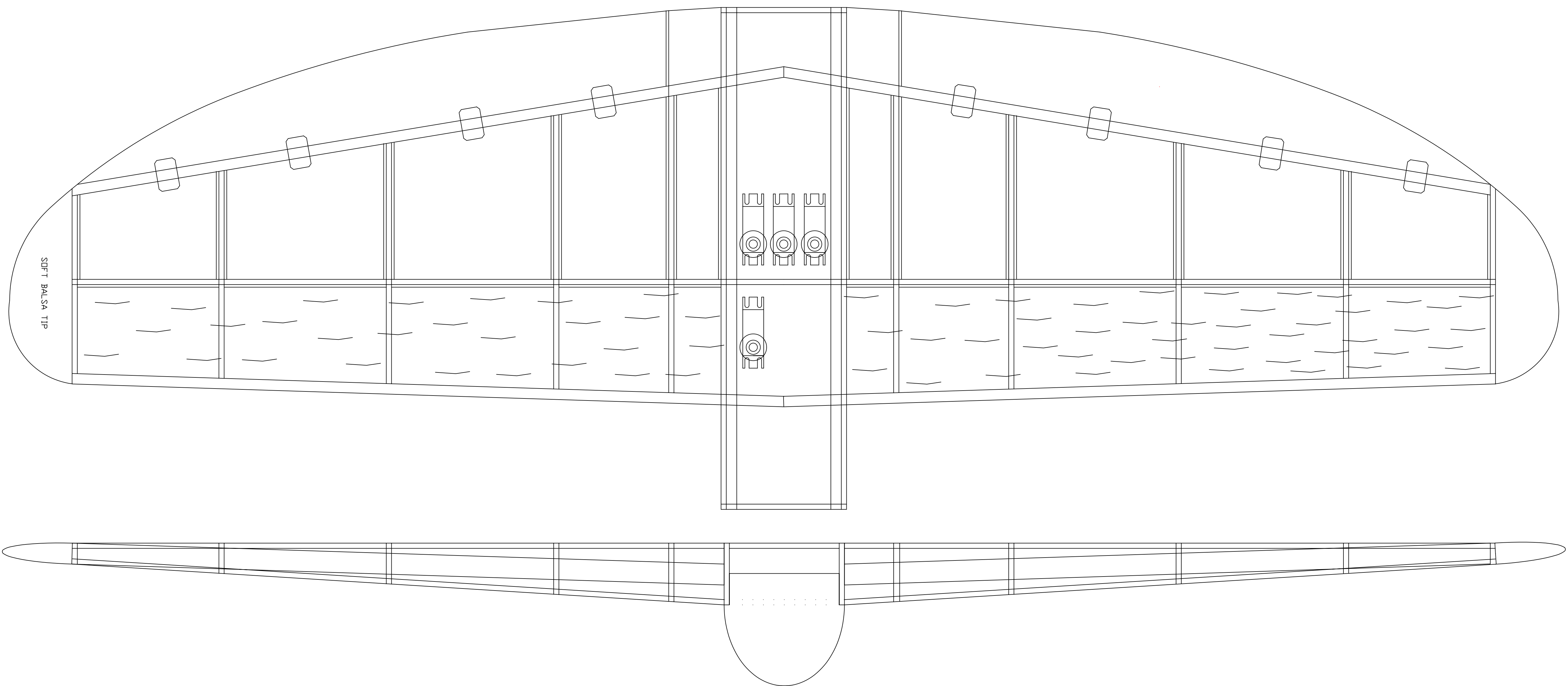
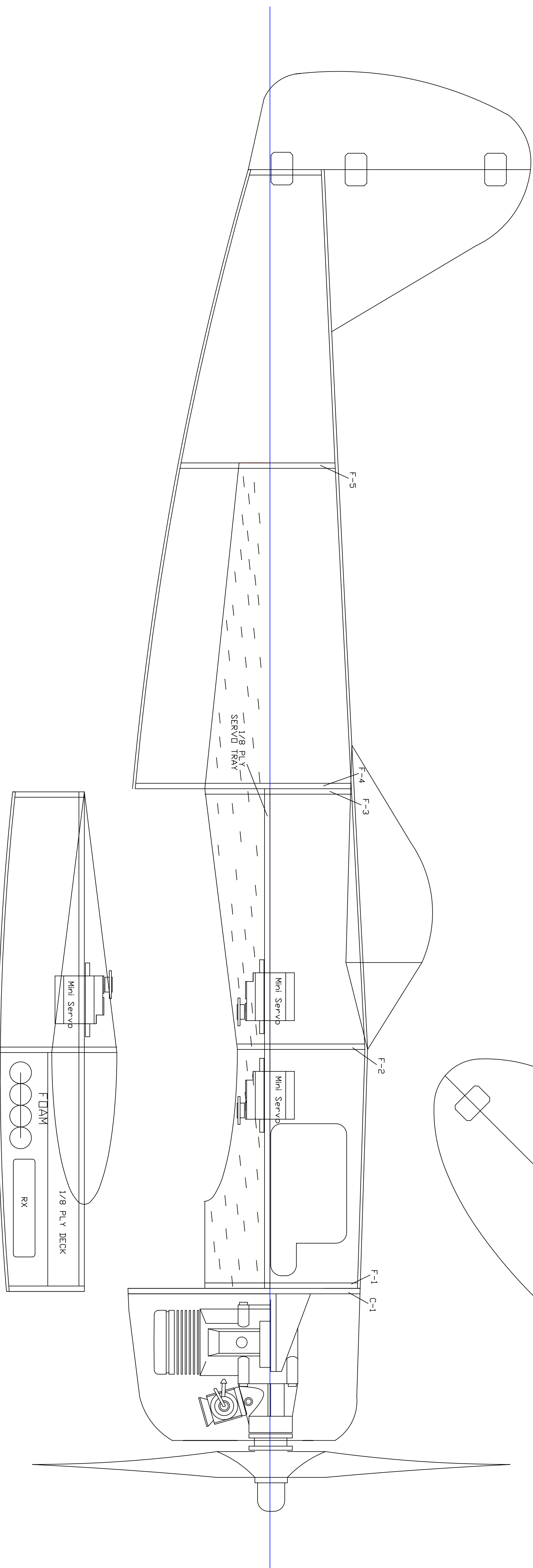
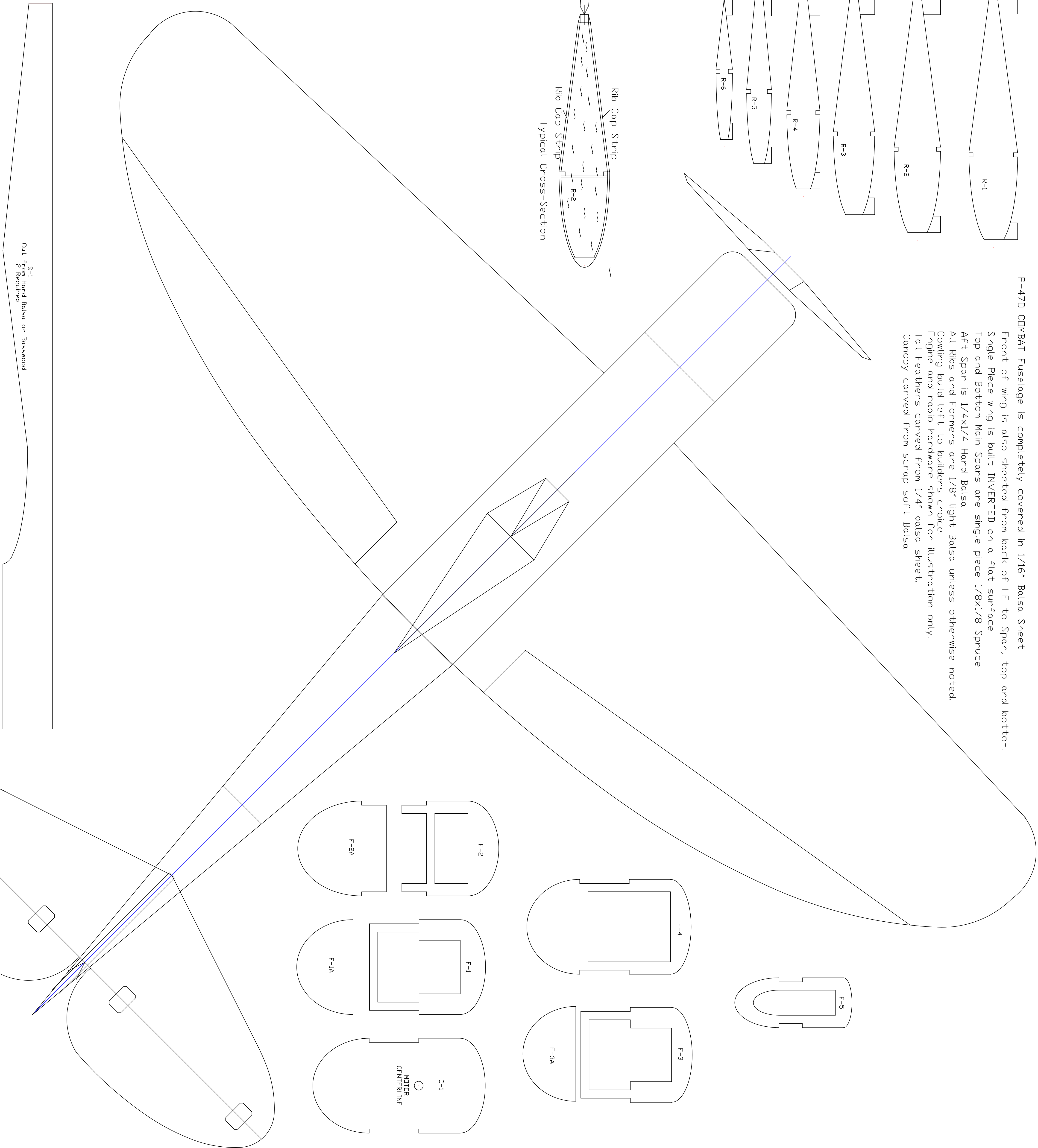
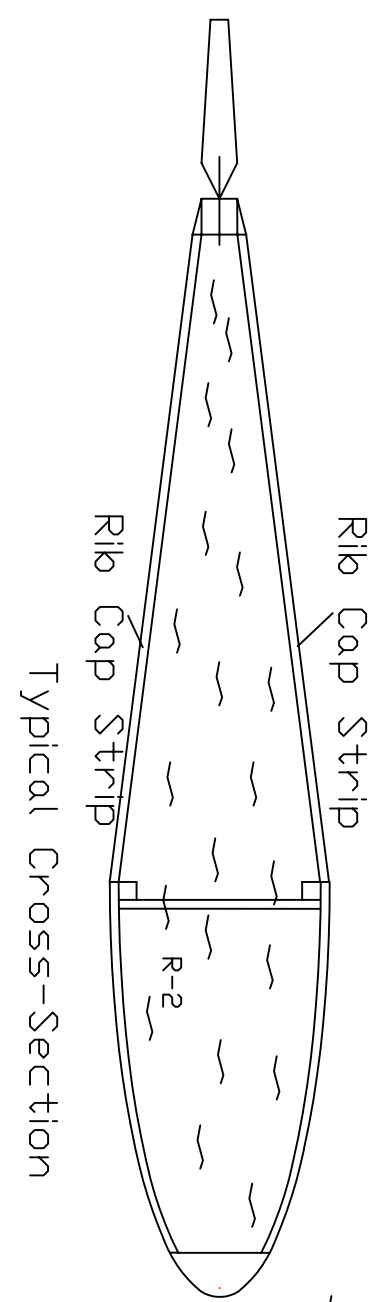
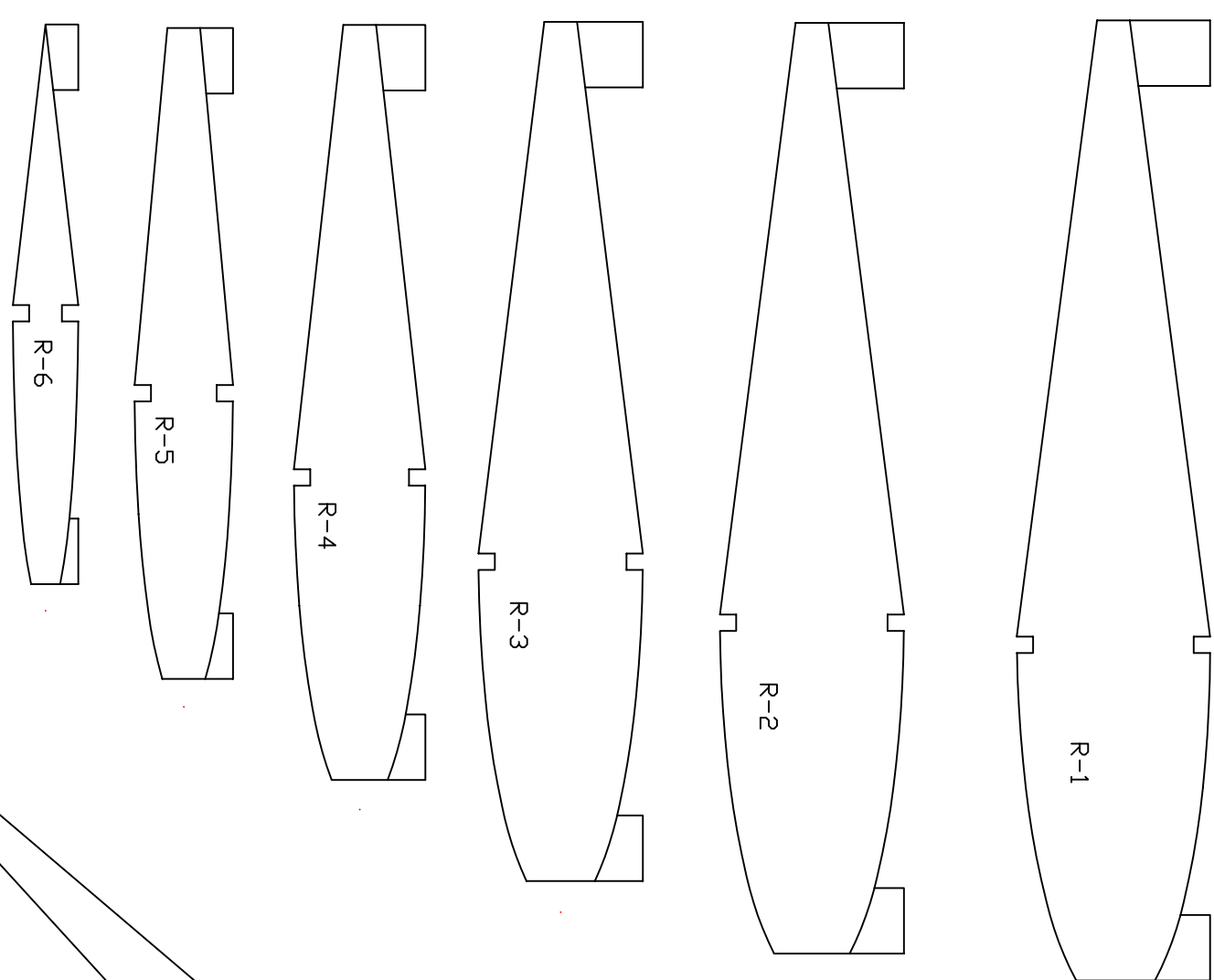
All Ribs and Formers are 1/8" light Balsa unless otherwise noted.

Cowling build left to builders choice

Engine and radio hardware shown for illustration only.

Tail Feathers carved from 1/4" balsa sheet.

Canopy carved from scrap soft Balsa



P-47D Sport

Original Profile Views by - Unknown
Construction Details Added by - Norm Meyers

