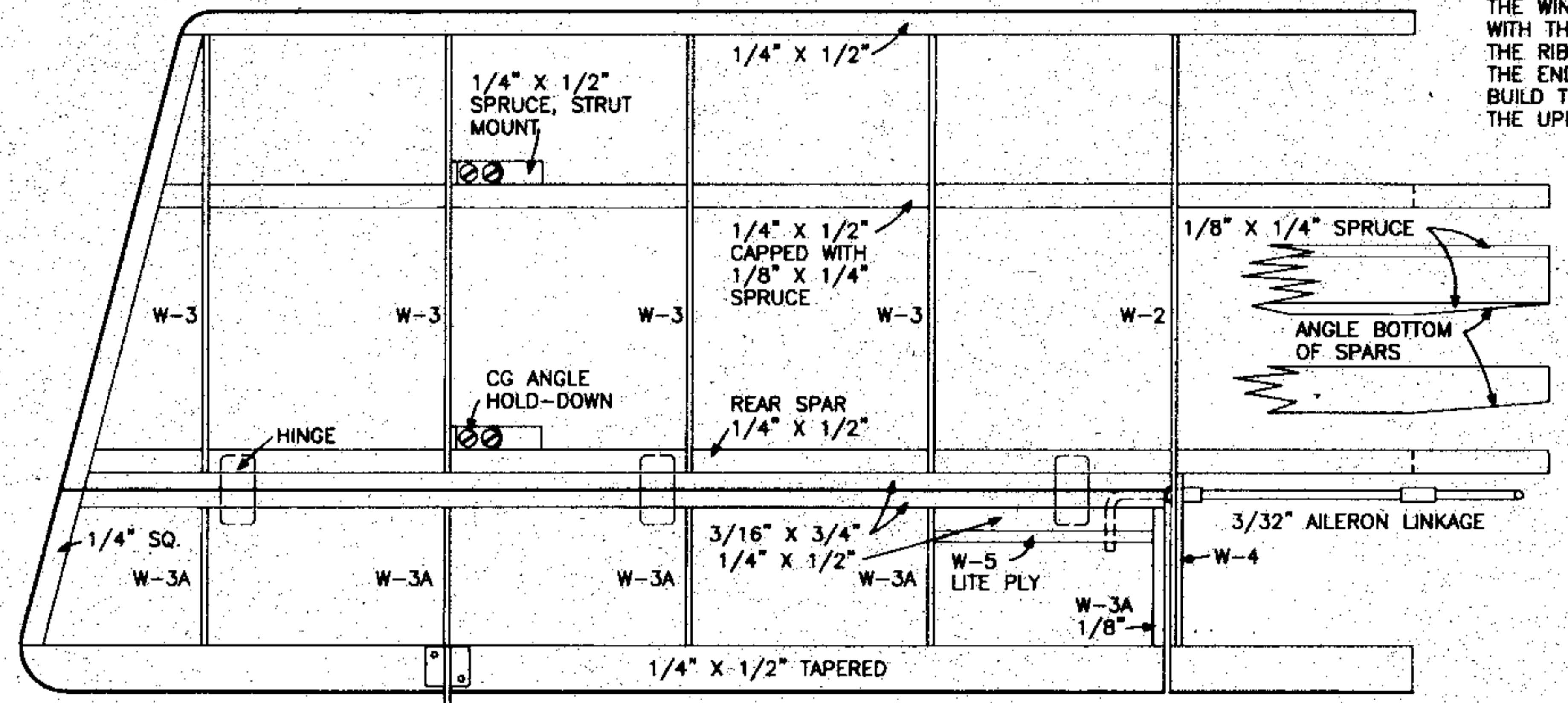
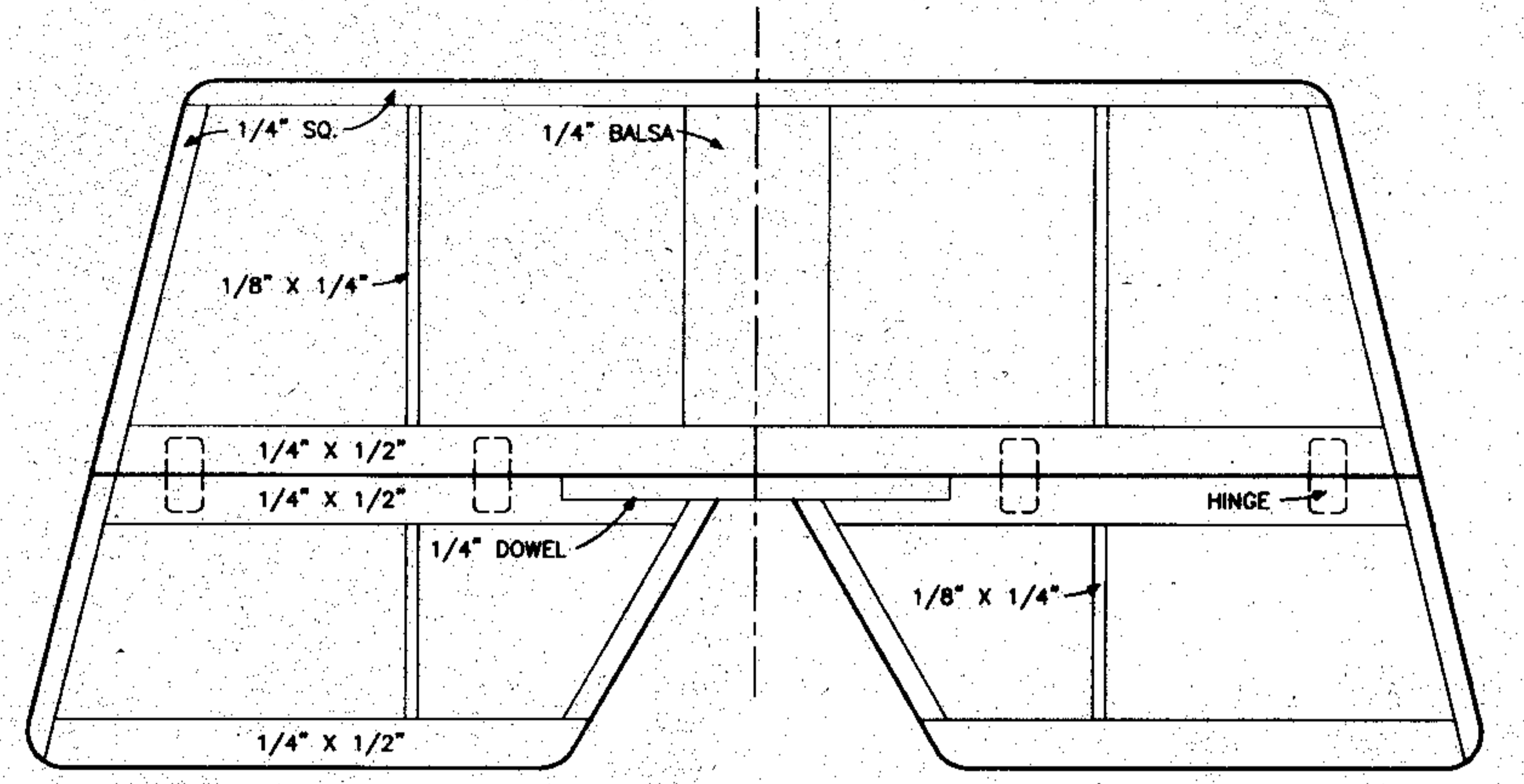
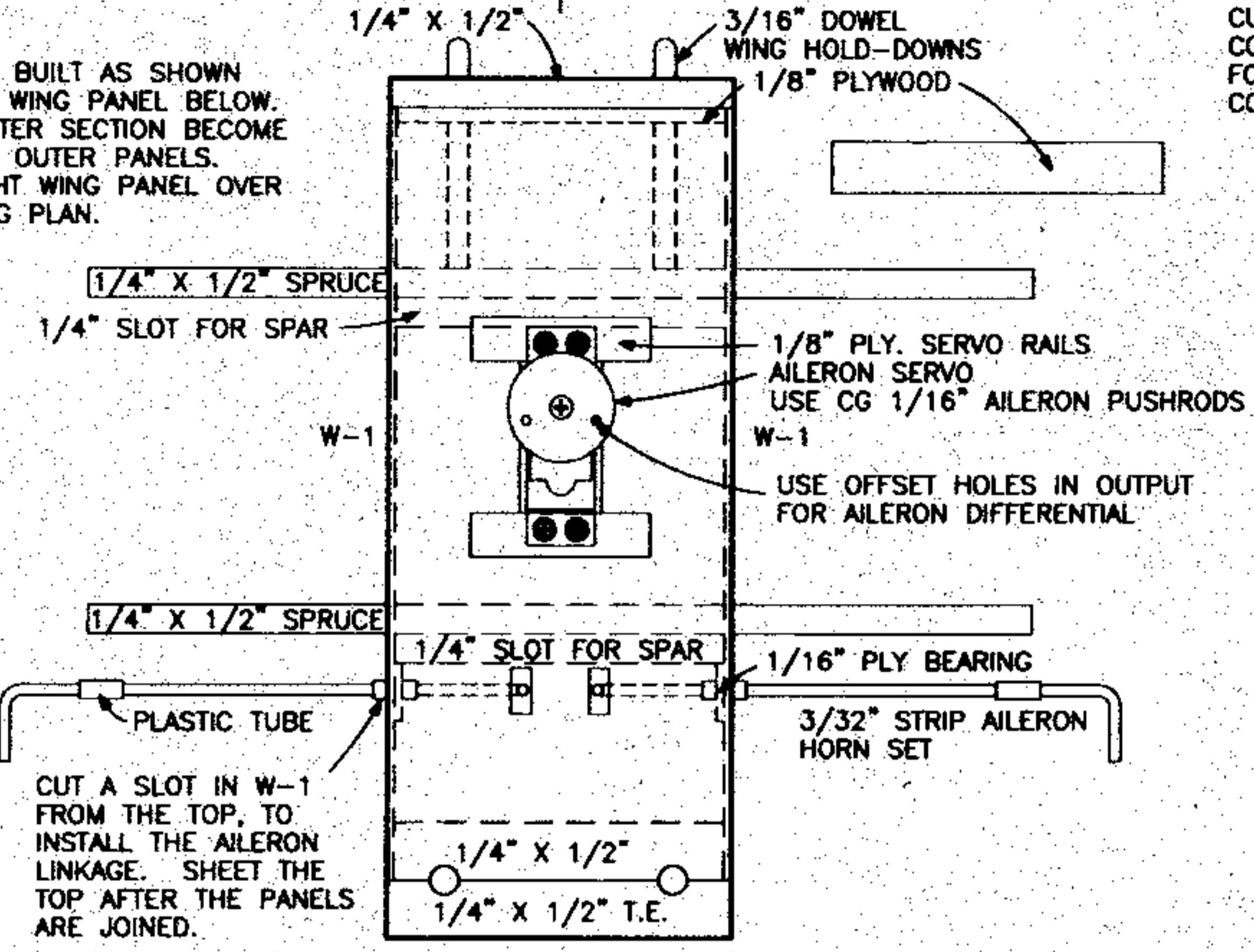


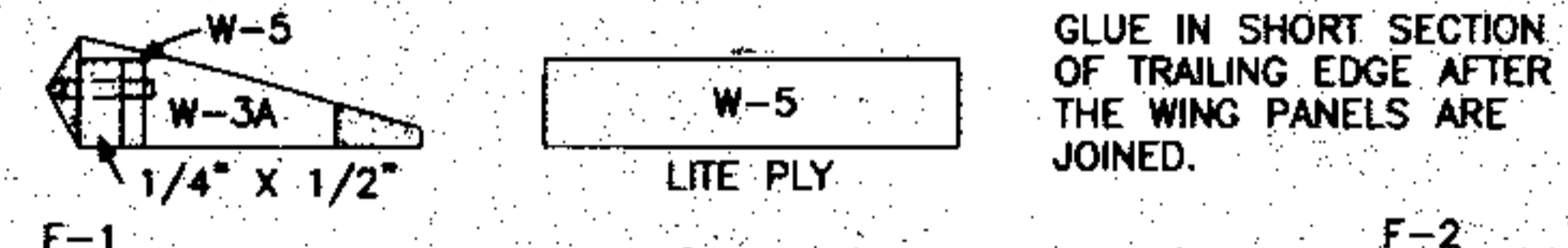
1-3/8" DIHEDRAL UNDER WING TIP, TOP WING



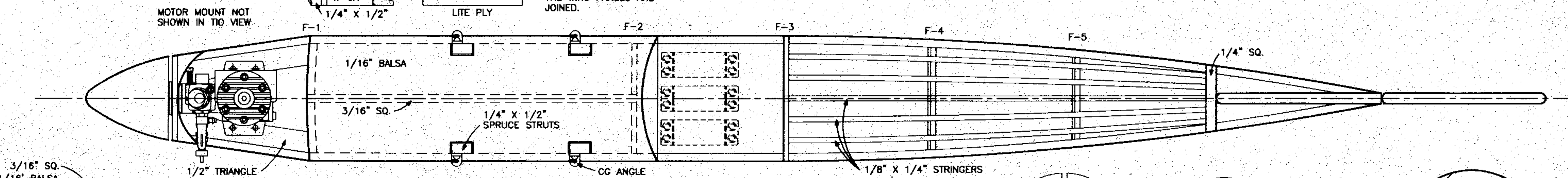
THE WING PANELS ARE BUILT AS SHOWN WITH THE LOWER LEFT WING PANEL BELOW. THE RIBS OF THE CENTER SECTION BECOME THE END RIBS OF THE OUTER PANELS. BUILD THE LOWER RIGHT WING PANEL OVER THE UPPER RIGHT WING PLAN.



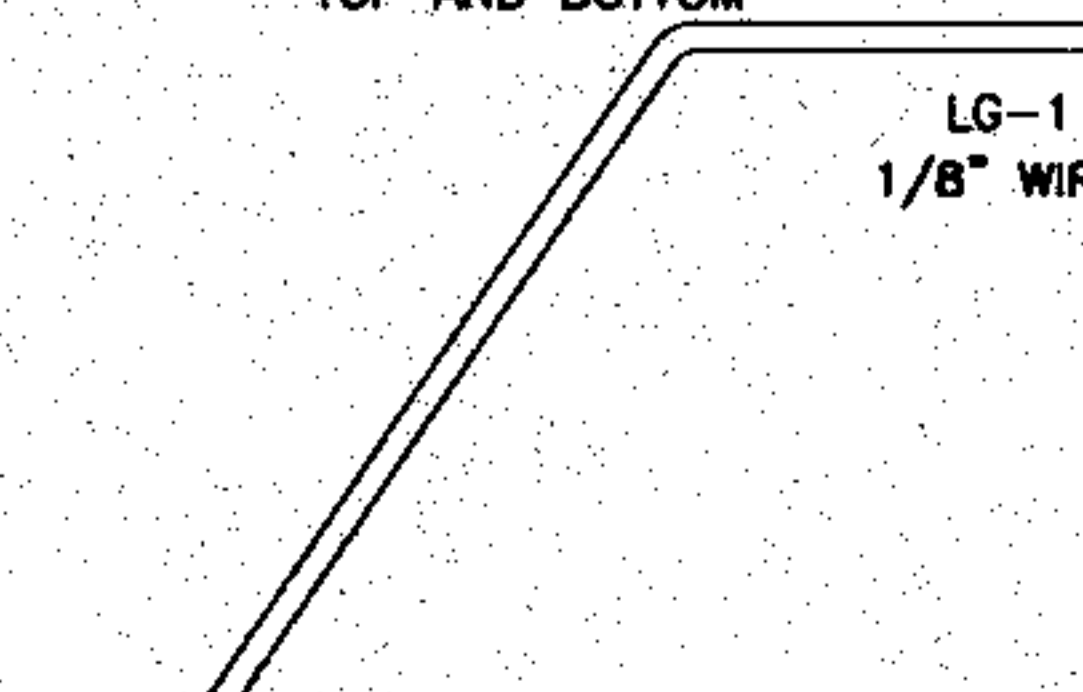
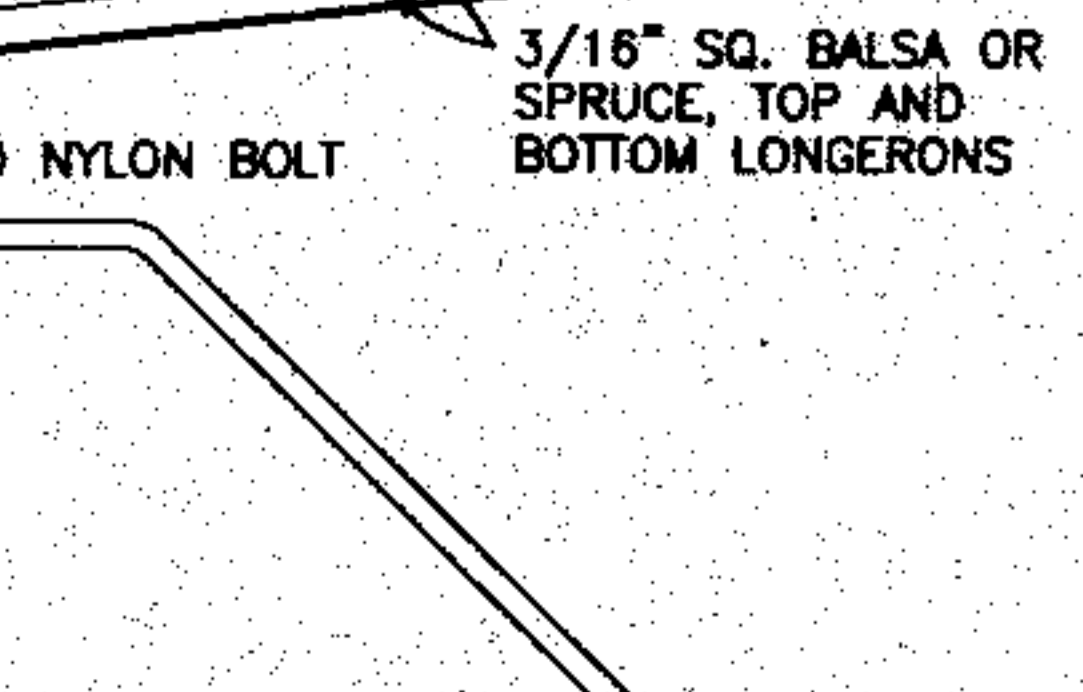
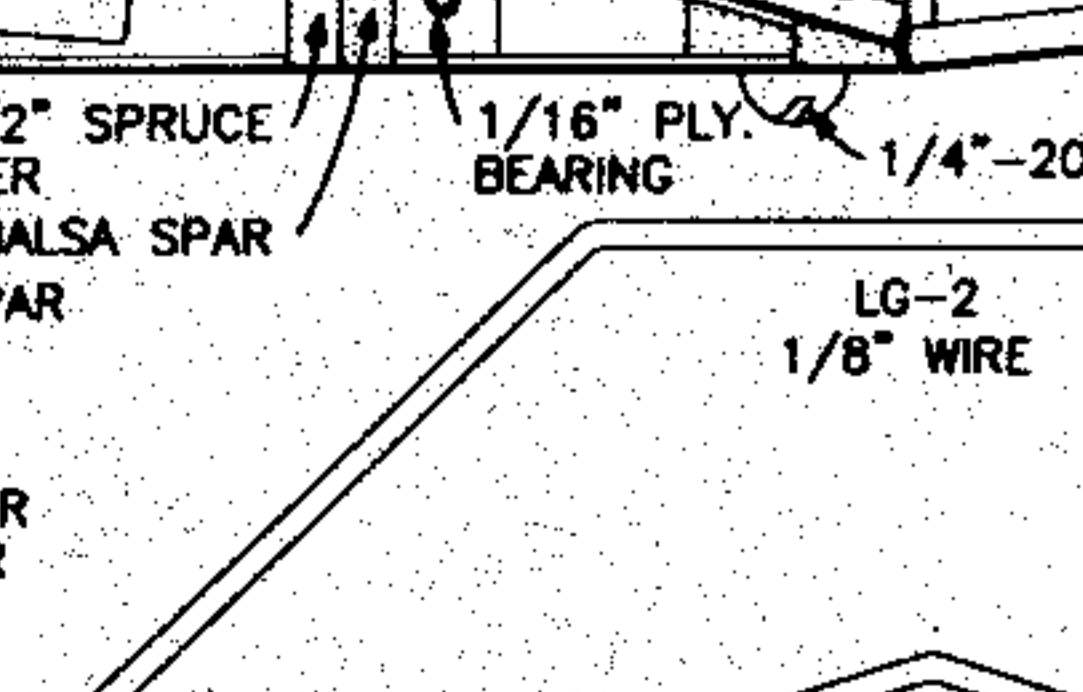
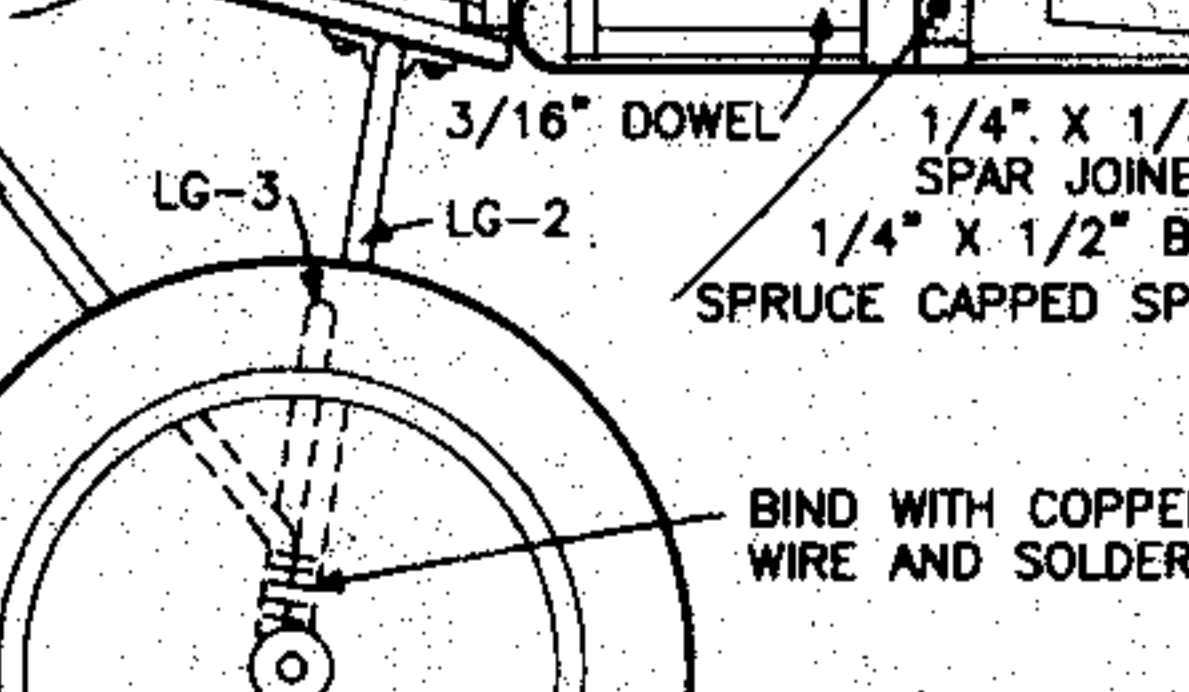
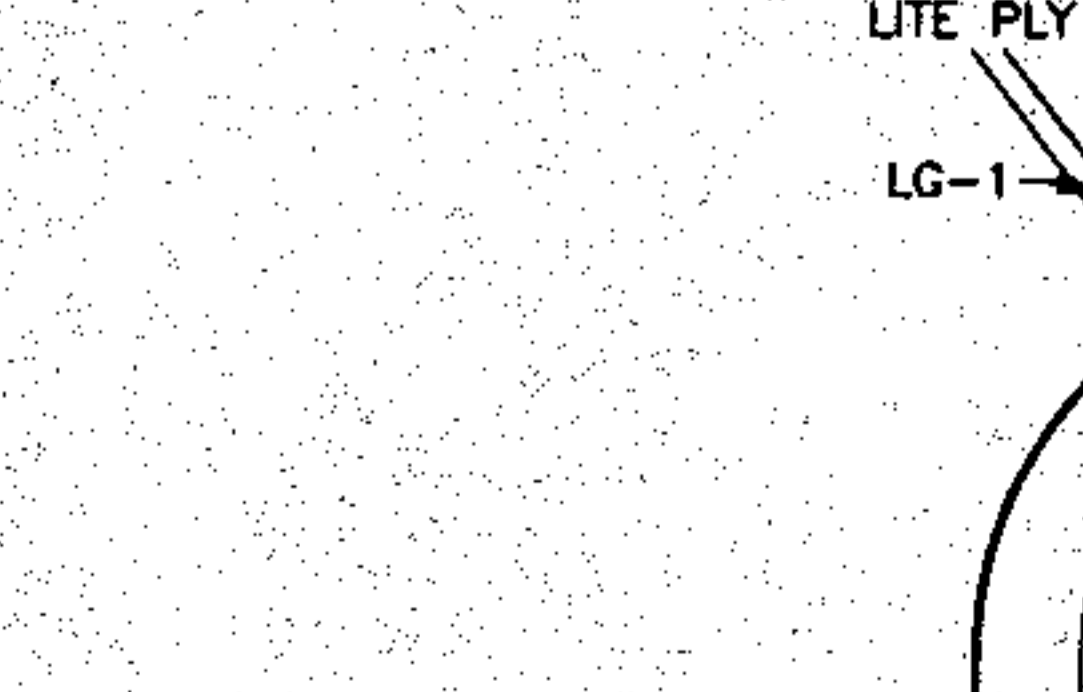
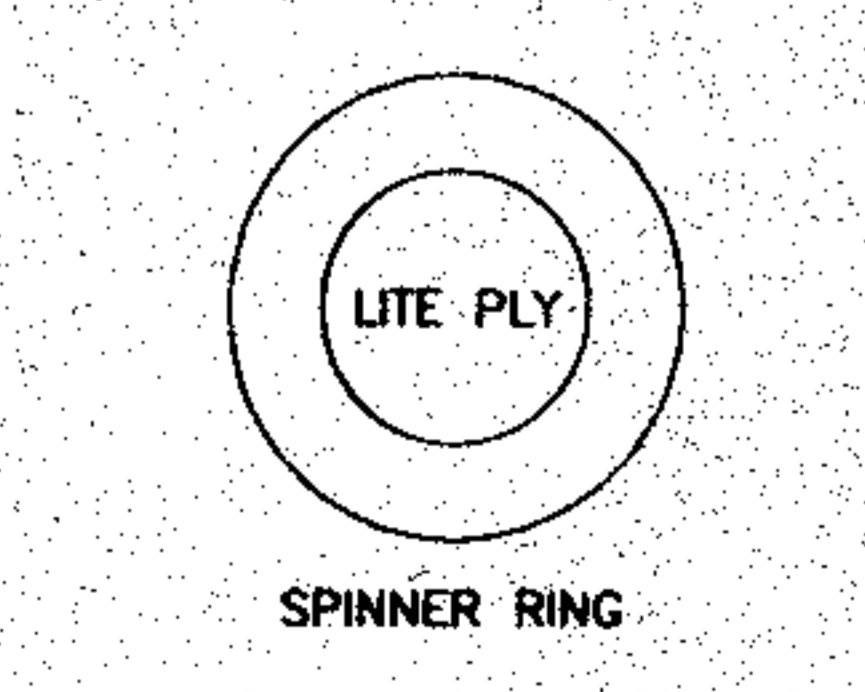
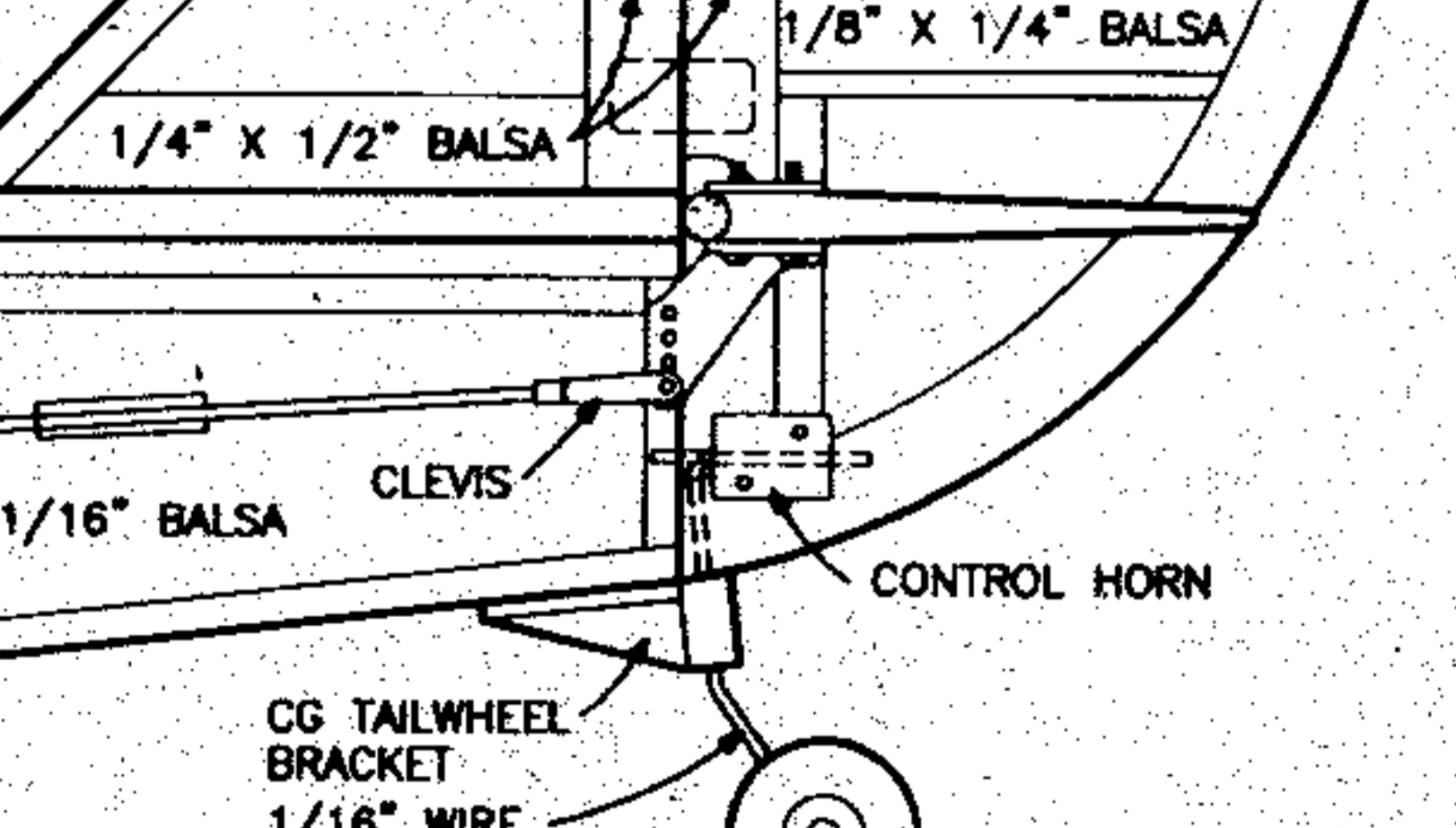
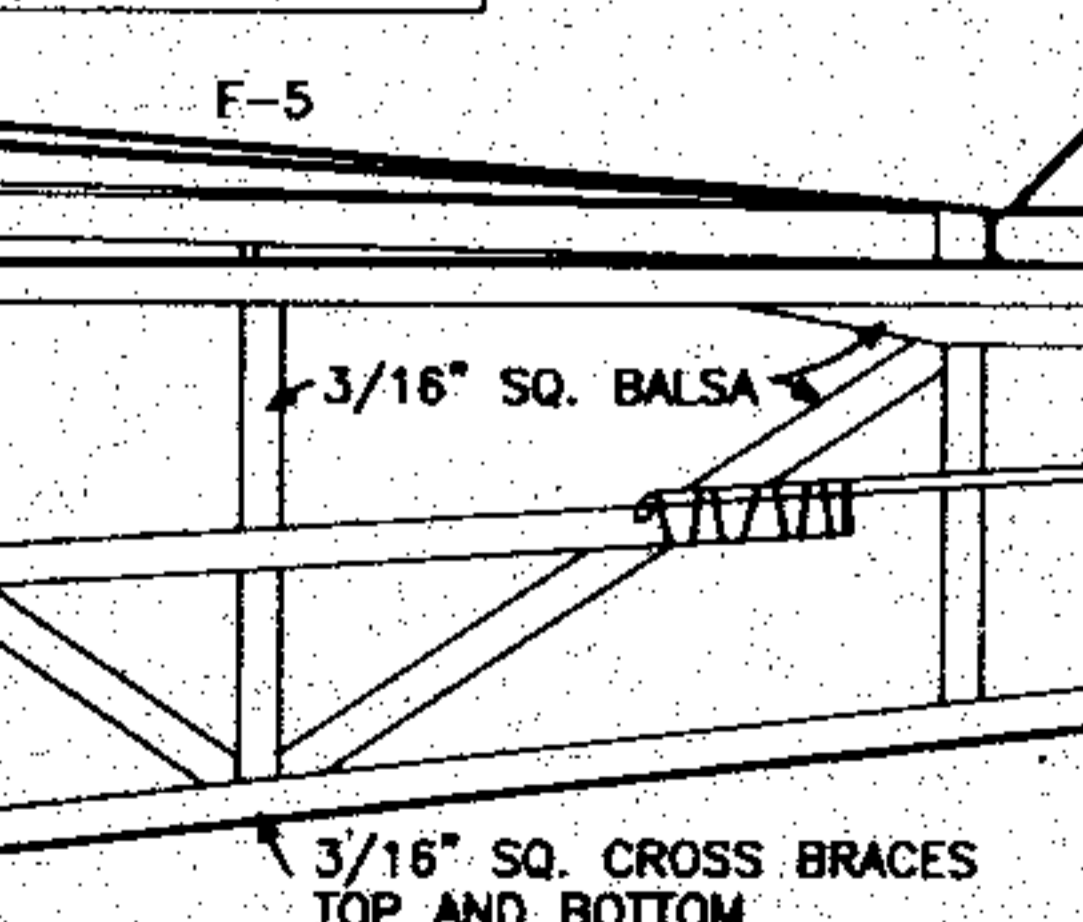
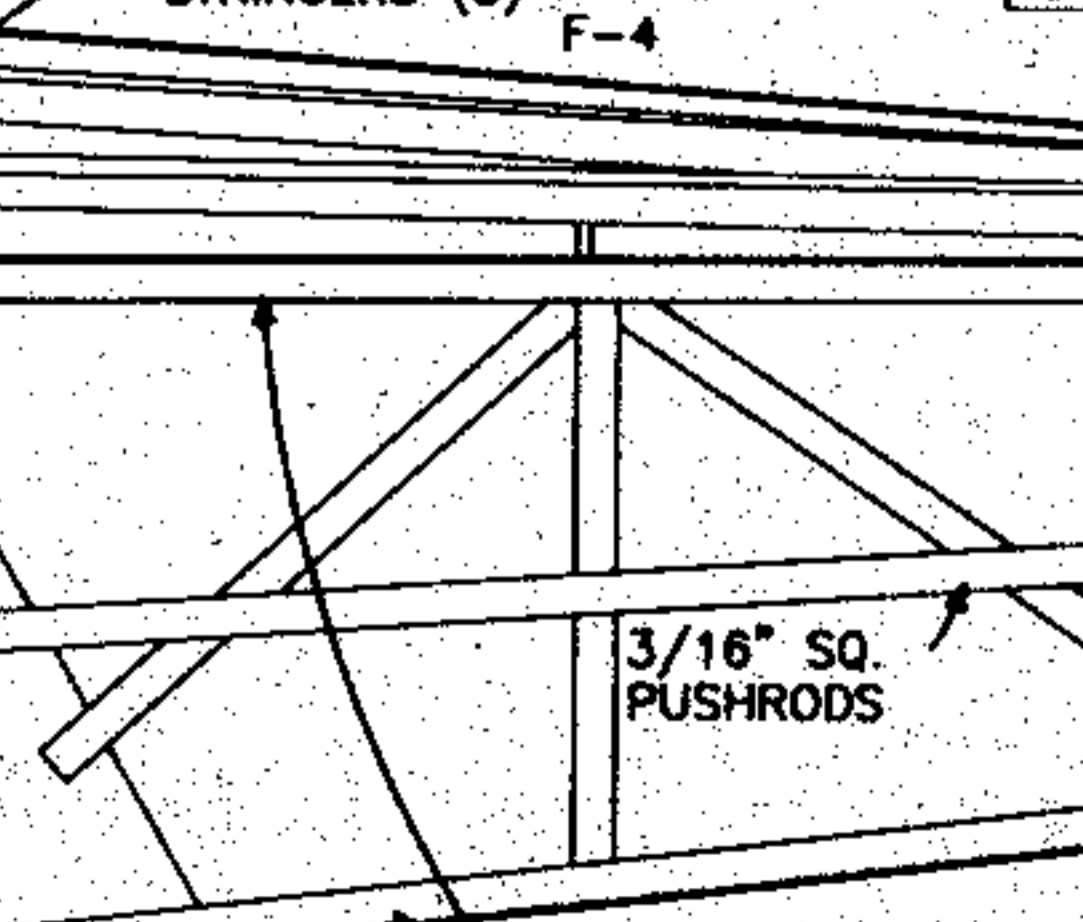
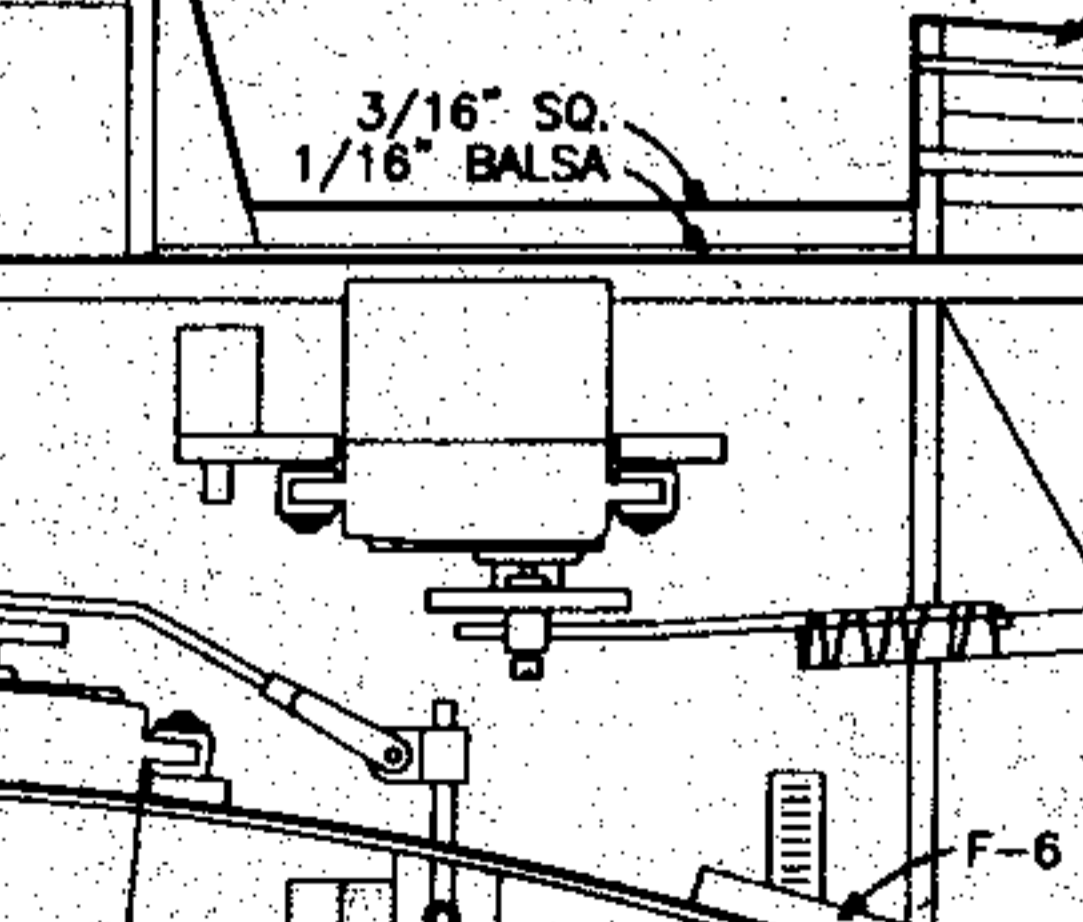
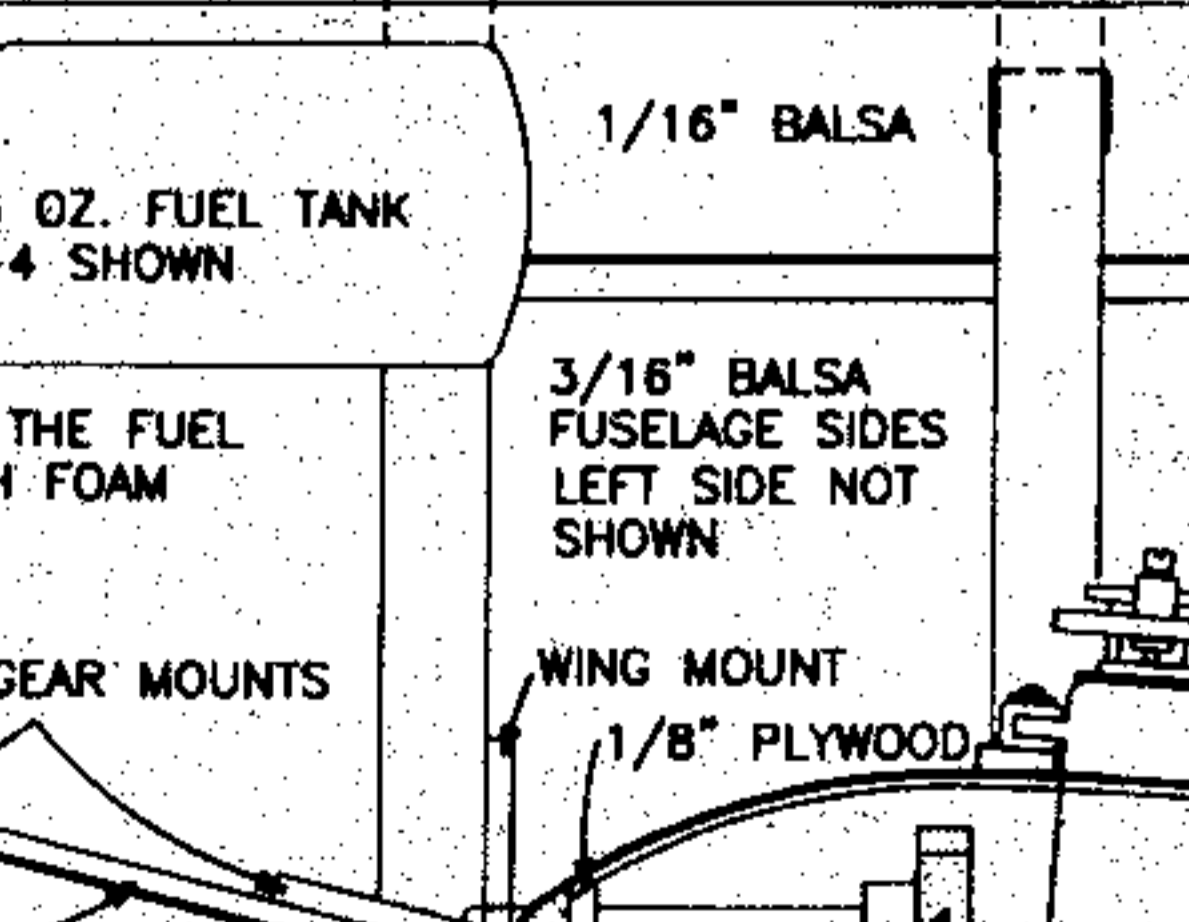
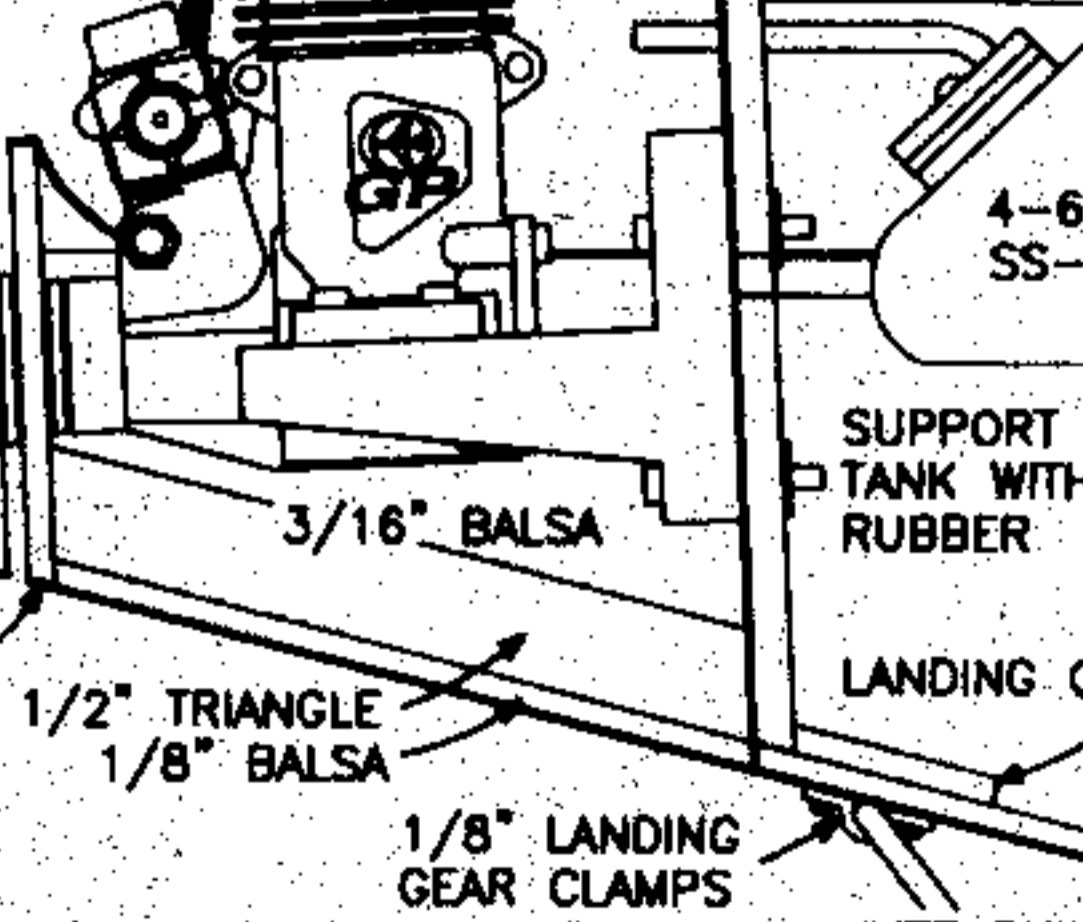
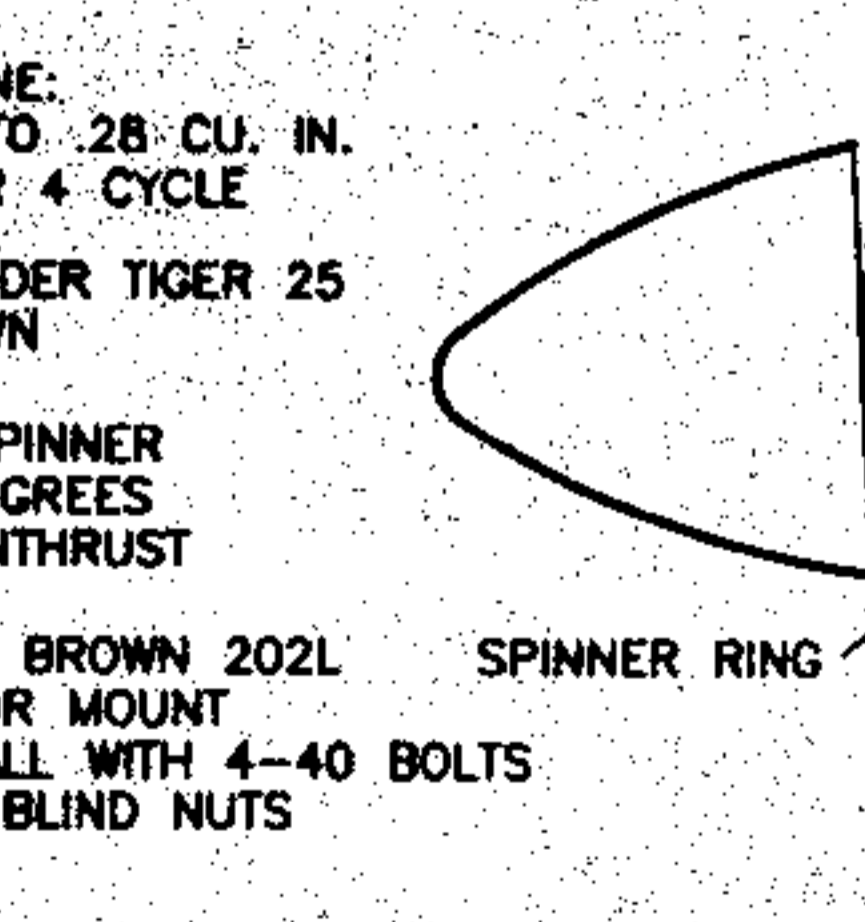
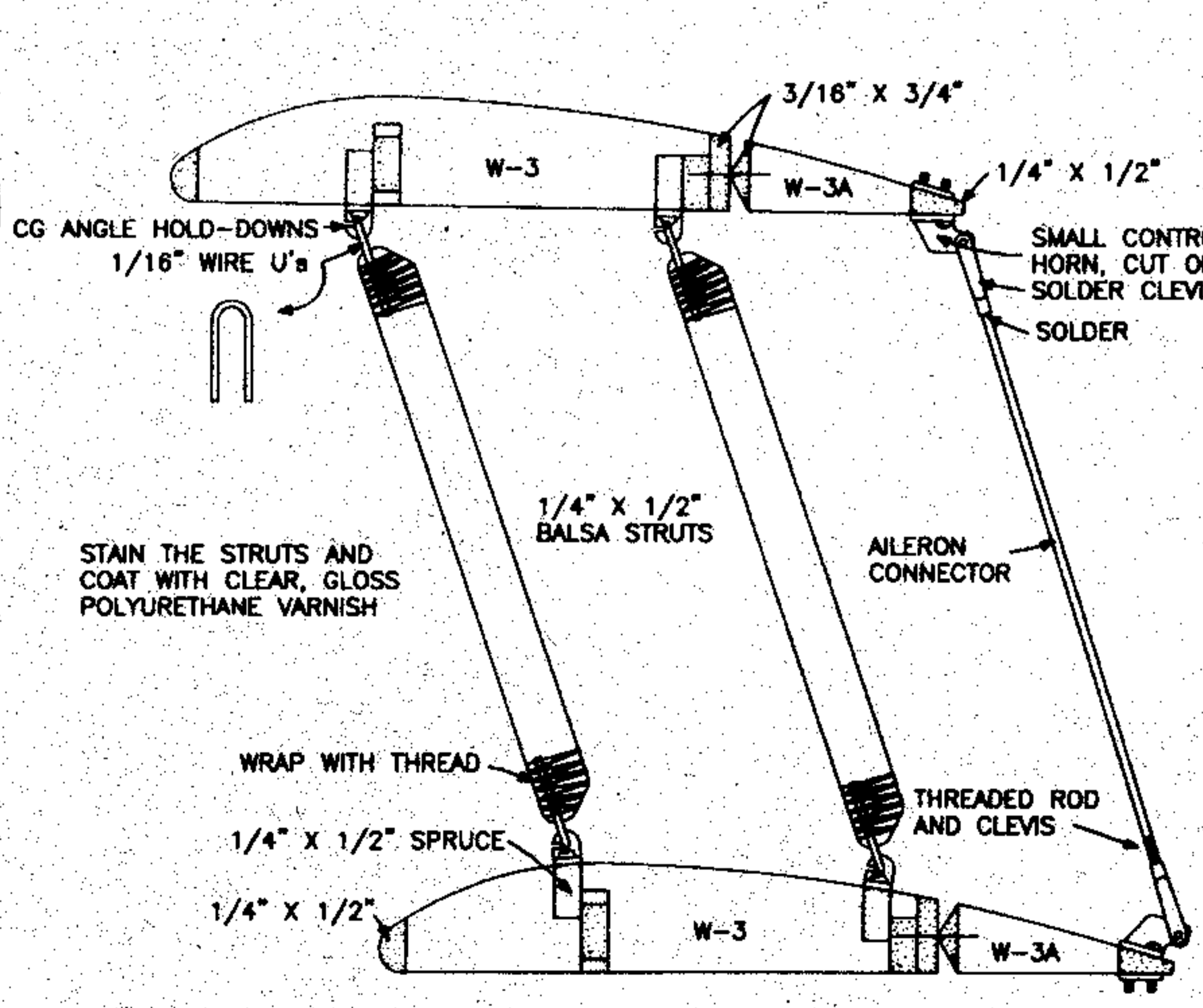
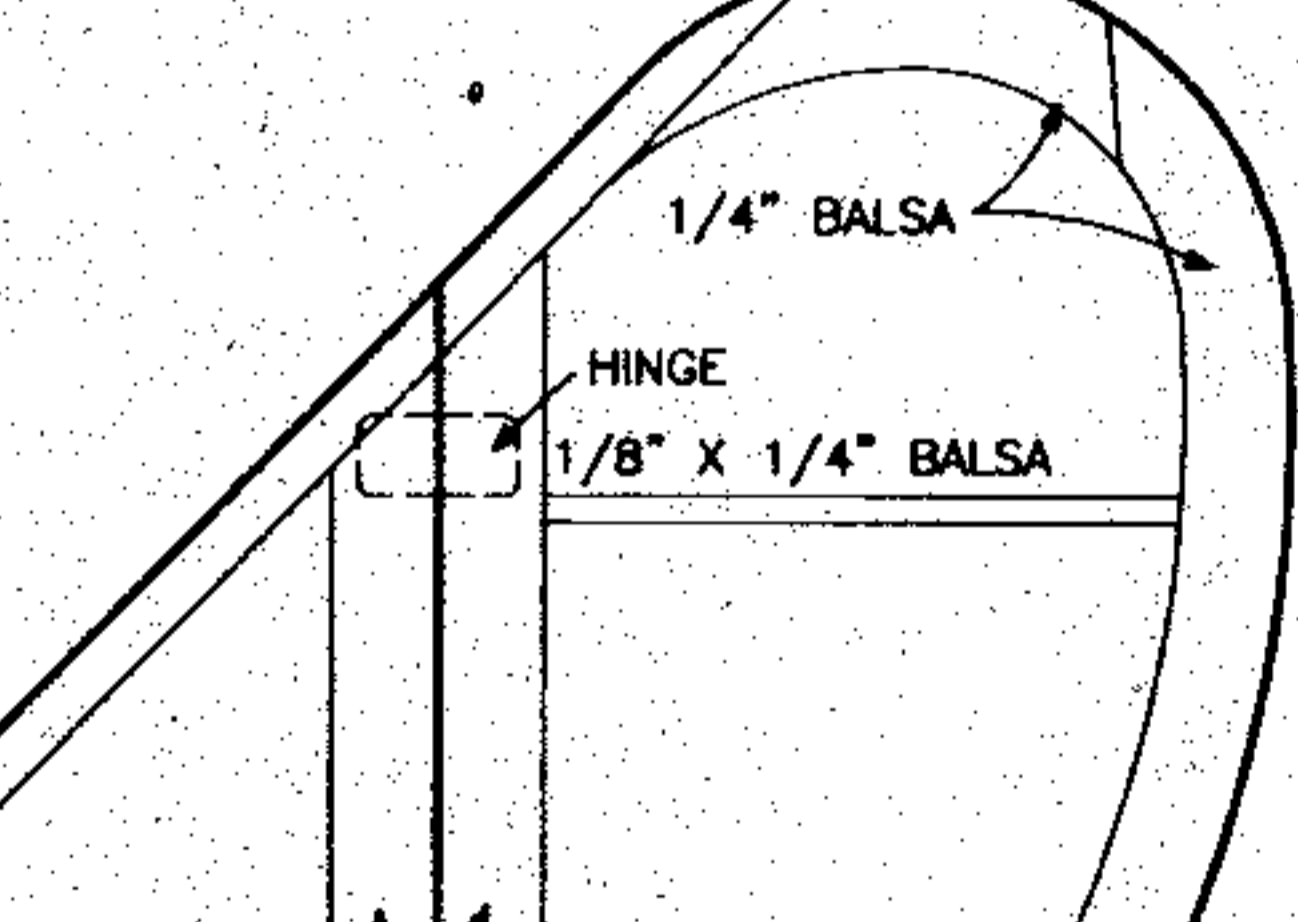
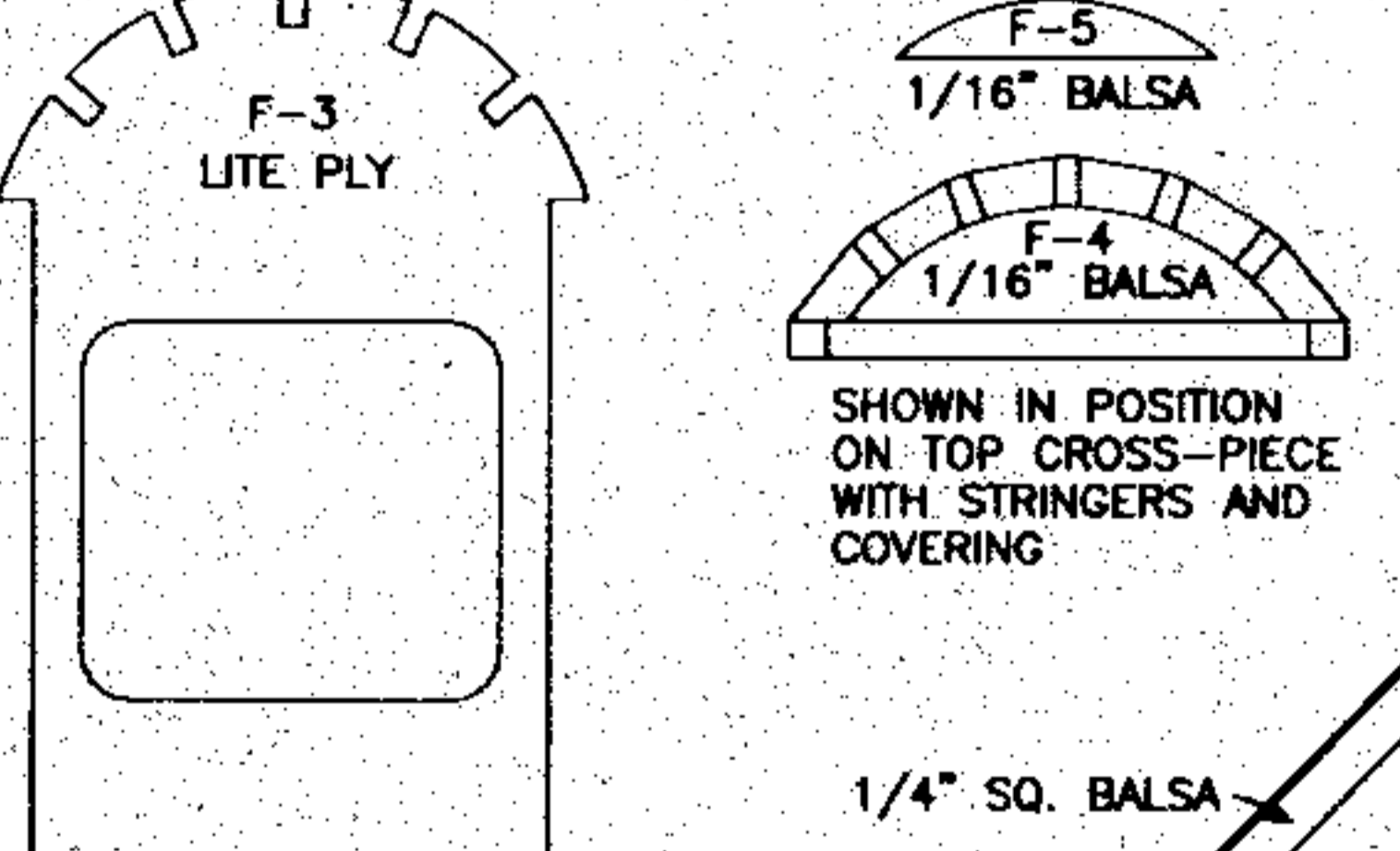
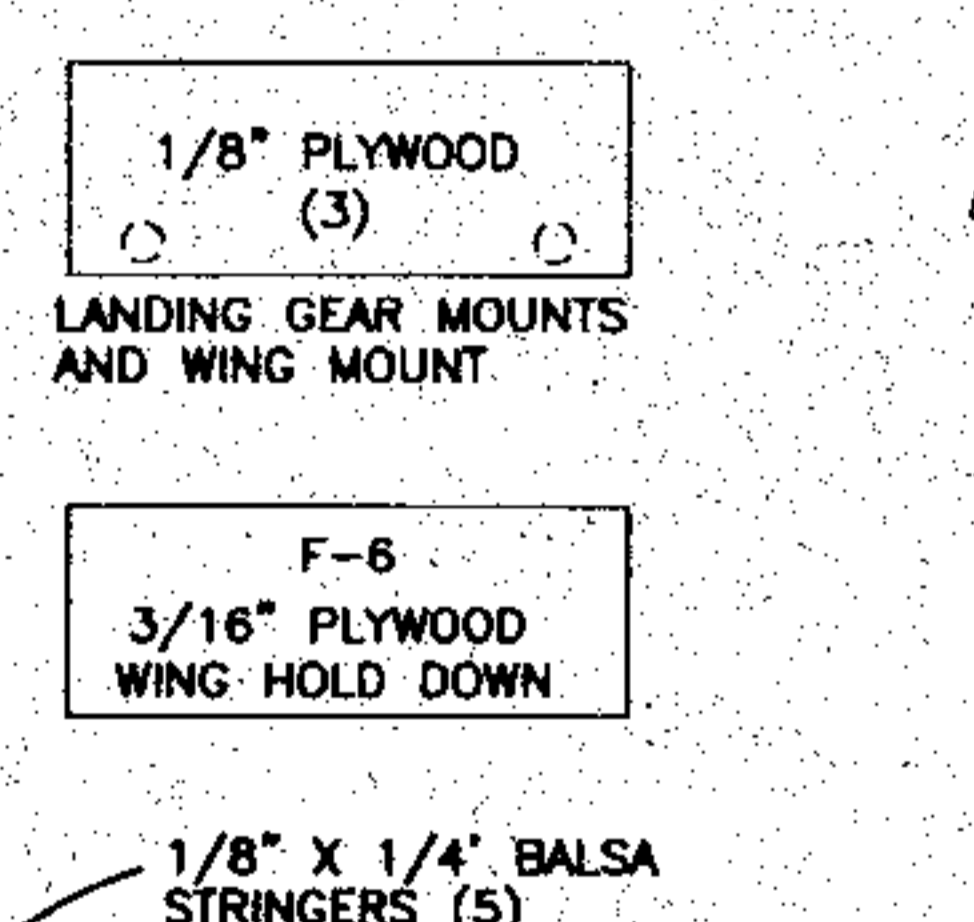
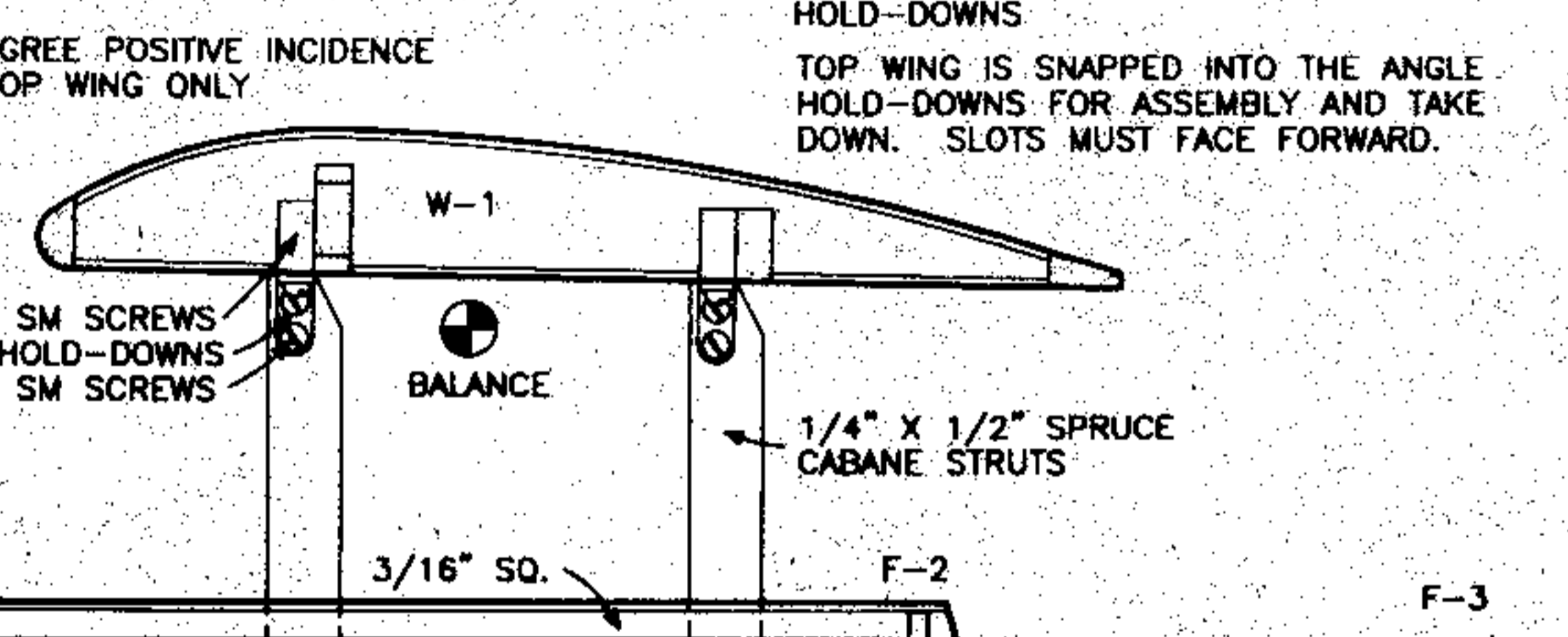
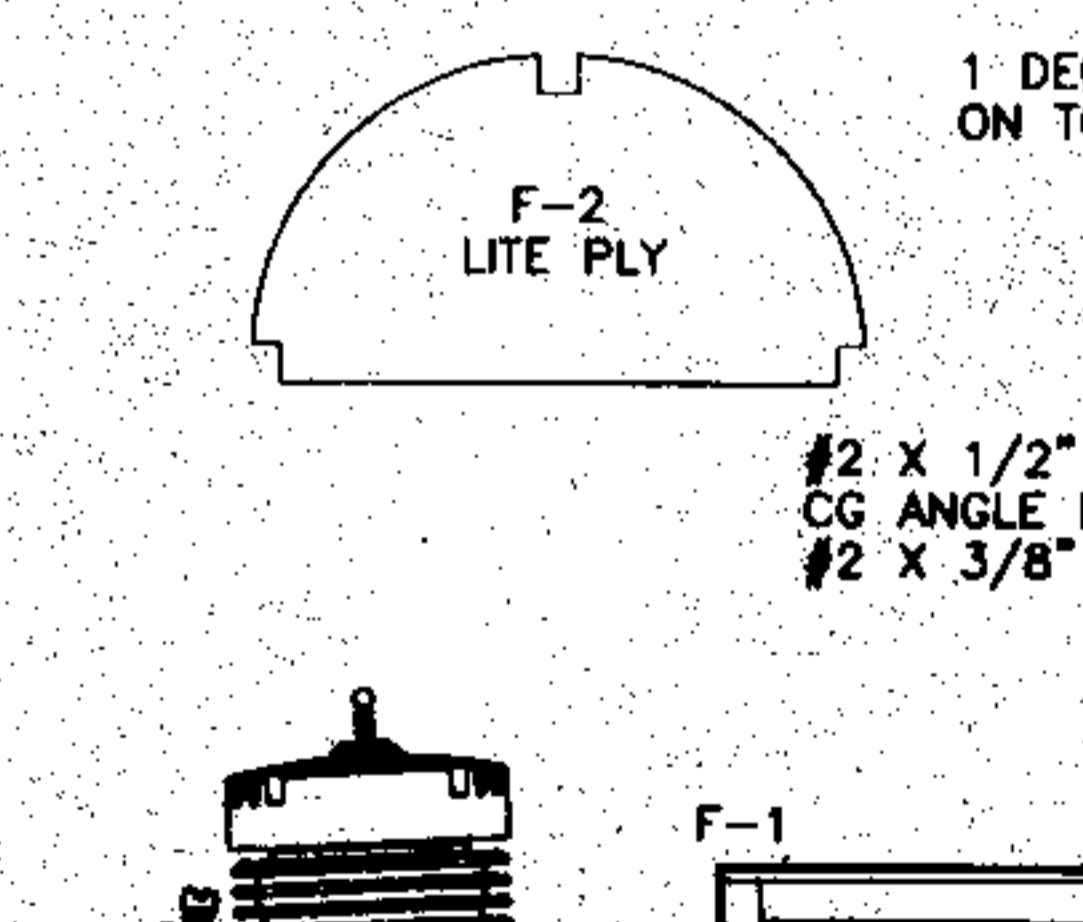
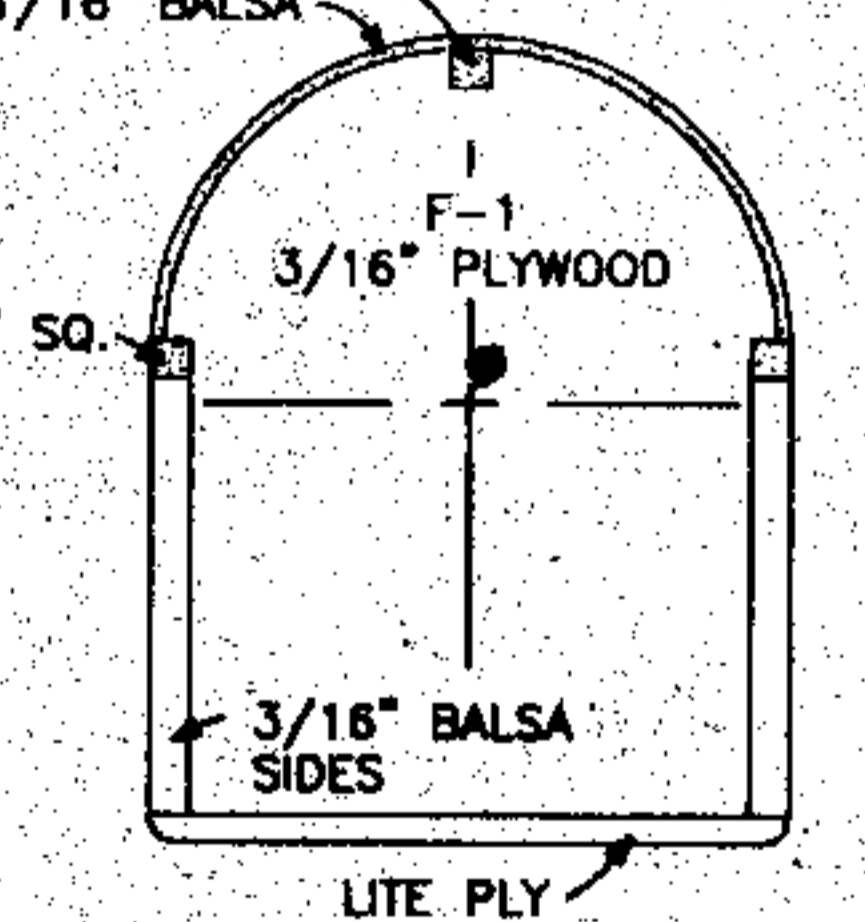
1" DIHEDRAL UNDER WING TIP, BOTTOM WING



GLUE IN SHORT SECTION OF TRAILING EDGE AFTER THE WING PANELS ARE JOINED.



CONTROL MOVEMENT  
 ELEVATOR 1/2" UP AND DOWN  
 RUDDER 1-1/2" RT AND LEFT  
 ALERONS 3/8" UP, 1/4" DOWN



WINGSPAN	39 IN.
WING AREA	515 SQ. IN.
LENGTH	35 IN.
WEIGHT	3 TO 3-1/2 LBS.
ENGINE	.20-.28 CU. IN. 2 OR 4 CYCLE
RADIO	4 CHANNEL

© 1941 ALL COMMERCIAL RIGHTS RESERVED

**GOLDEN OLDIE 20**

DESIGNED AND DRAWN BY FRED REESE