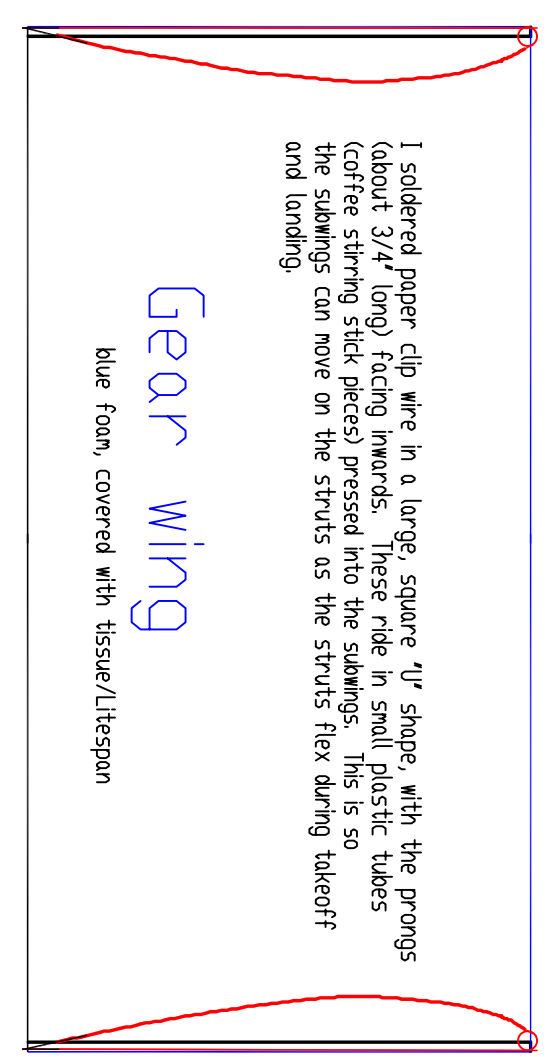
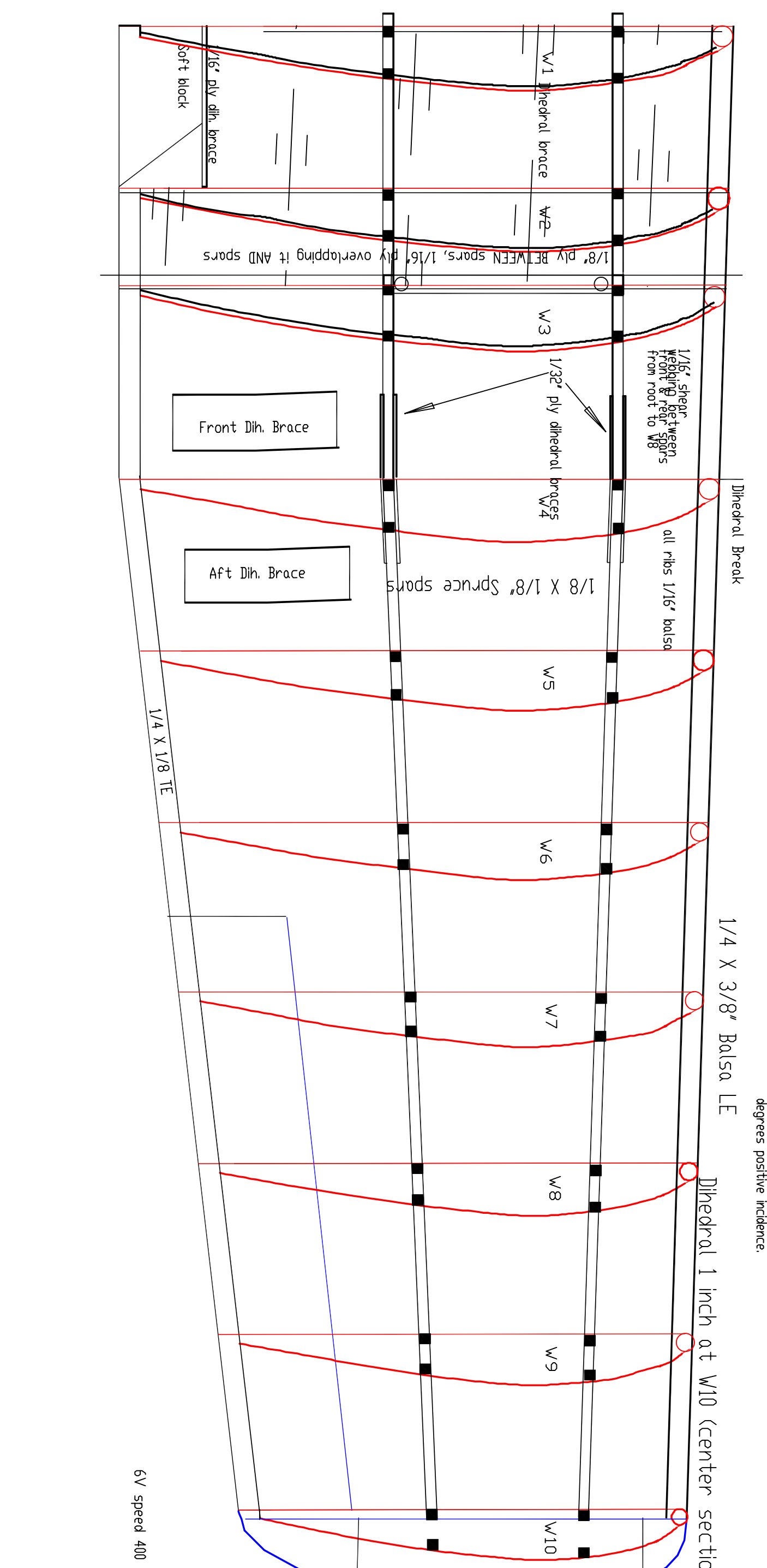


Still to draw/figure
 1. Dihedral & Dihedral brace
 2. Exact strut lengths/shapes

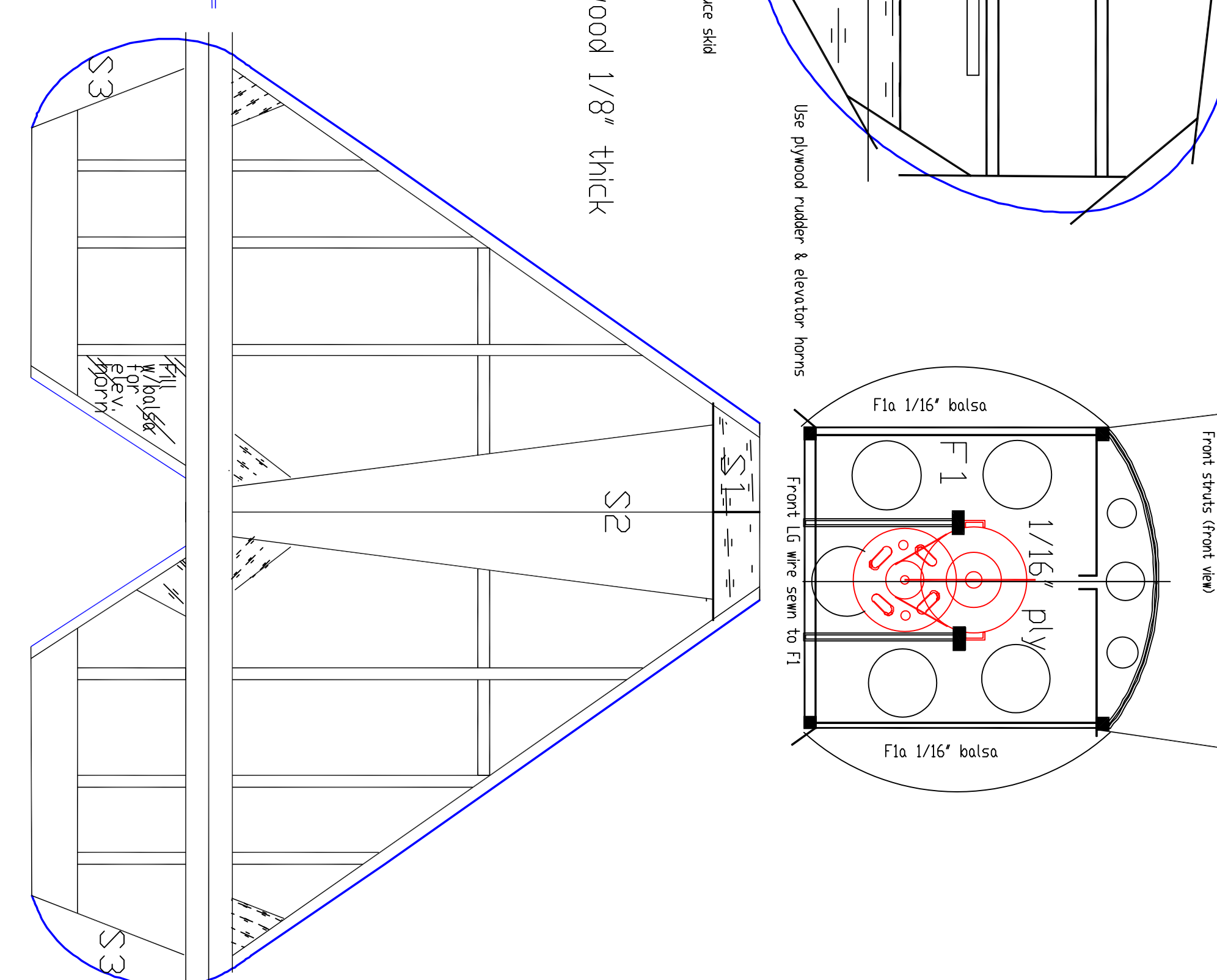
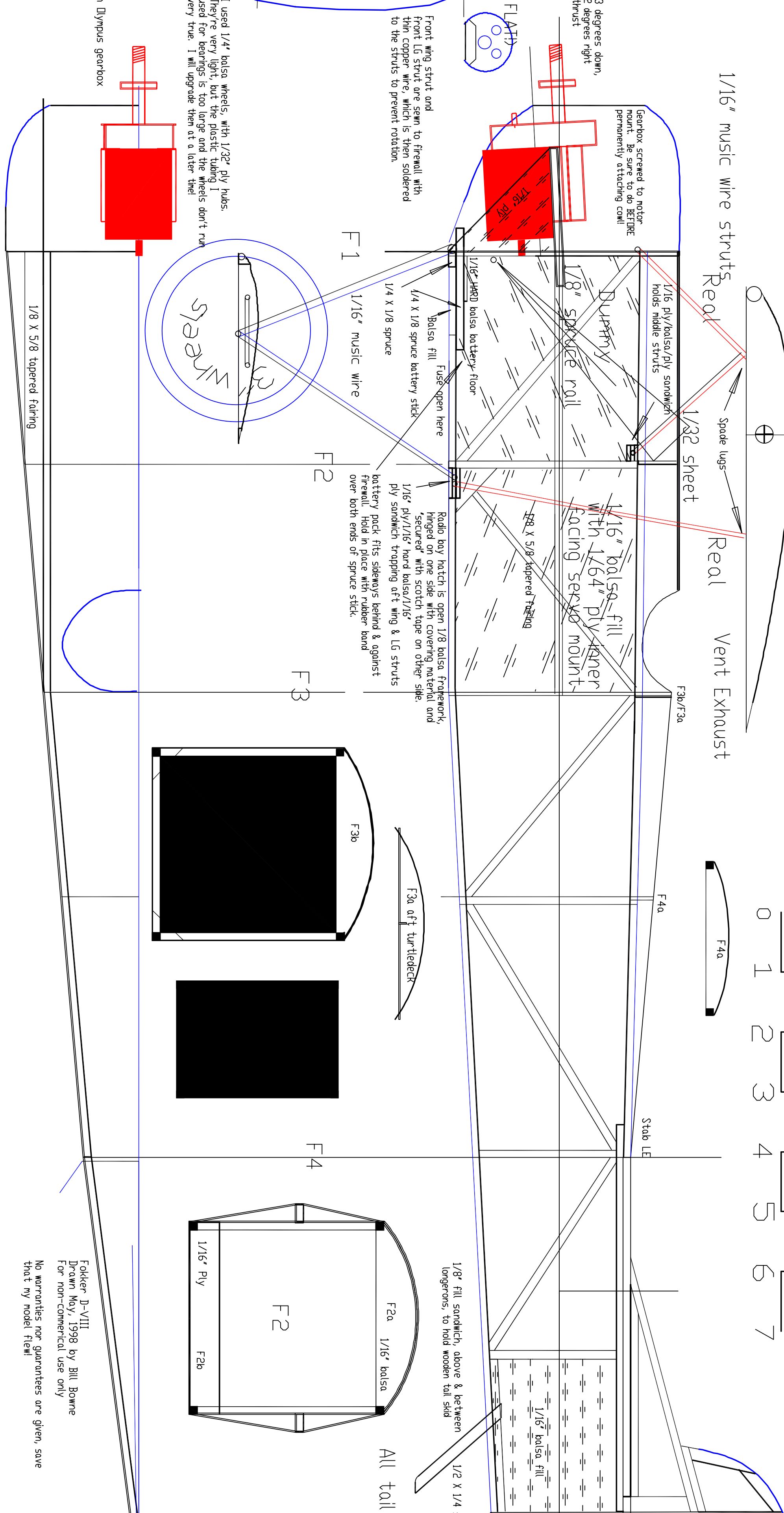


gear wing
 Soldered paper clips are in a large square 'U' shape, with the prongs about 3/4" long facing inward. These ribs in each static class are spaced evenly along the length of the struts so the struts flex during lift-off and landing.
 Diheders: See side view of motor area
 Bar ribs covered with clear tape
 Bar ribs spaced 1/8" apart
 Bar ribs spaced 1/8" apart
 Bar ribs spaced 1/8" apart



Each strut needs to include a shoulder which is about 1/8" wide. Soldered paper clips are used to hold the struts in place over the motor area. This is a color code. I don't know the meaning of 'You may want to use wing' being so important.

Struts are 1/16" music wire. Start ends at wing are butted and soldered. Soldered ends are 1/2" long. Then butted ends are 1/2" long. Soldered ends are 1/2" long.



Fuselage is built by Bill Borne. For non-commercial use only. No warranties or guarantees are given, save that my model flew!